

LINHOF PRICE / PRODUCT LISTING

VALID AS OF JANUARY 01, 2015



PRICE / PRODUCT LISTING 2015

VALID AS OF JANUARY 01, 2015

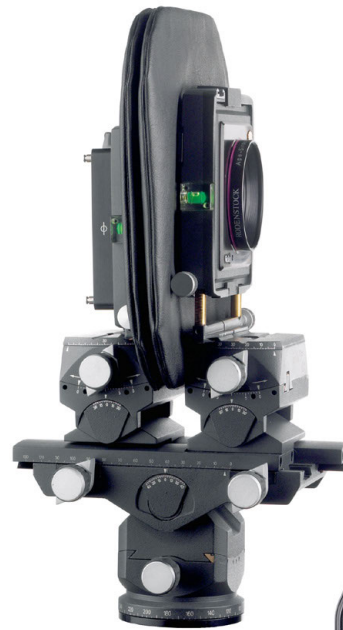
SYSTEM LINHOF M 679cs.....	3, 5
SYSTEM LINHOF TECHNO.....	4, 5
ACCESSORIES SYSTEM LINHOF M 679cs / TECHNO.....	5
DIGITAL LENSES M 679 / TECHNO (SCHNEIDER).....	6
DIGITAL LENSES M 679 / TECHNO (RODENSTOCK).....	7
MASTER TECHNIKA CLASSIC.....	8
MASTER TECHNIKA 3000.....	9
TECHNIKARDAN S 23.....	10
TECHNIKARDAN S 45.....	11
KARDAN re.....	12
LENSES / RECOMMENDED LENSBOARDS.....	13
LENSBOARDS.....	14
ELECTRONIC SHUTTER SYSTEMS / ACCESSORIES.....	15
TECHNORAMA 612 pc II.....	16
TECHNORAMA 617s III.....	17
ACCESSORIES / CENTER FILTER.....	18
TRIPOD HEADS.....	19
BALLHEADS / PANORAMA PLATES.....	20
PROFESSIONAL TRIPODS.....	21
TRIPOD ACCESSORIES.....	22
STUDIOSTANDS.....	23
REPRO.....	24
PRICE / PRODUCT LISTING.....	25
DELIVERY AND PAYMENT TERMS.....	31

LINHOF M 679cs incl. bellows, front and rear standard, with integrated benchholder with stepless lateral levelling, without lens and back	000117	6.159,-
Wide-angle Bellows M 679	002754	422,-
Normal Bellows M 679 (spare)	002753	299,-
Basic Compendium Lensshade M 679 incl. Filter Holder	001939	763,-
Pro Compendium M 679 incl. Filter Holder and Vignetting Mask Holder	001940	1.132,-
Filter Holder M 679 M105x1 and 10x10 cm	001941	425,-
Vignetting Mask Holder	001942	407,-
Format dial 6x7 M 679cs for format 6x6 - 6x8 (included in camera price M 679cs)	003905	40,-
Format dial 3x3 M 679cs	003906	40,-
Format dial 6x9 M 679cs	003907	40,-
Format dial 24x36 M 679cs	003908	40,-
Format dial 33x44 M 679cs	003909	40,-
Format dial 36x48 M 679cs	003910	40,-
Flat Lensboard M 679 size 0	001160	110,-
Flat Lensboard M 679 size 1	001161	110,-
Flat Lensboard M 679 size 3	001173	110,-
Recessed Lensboard M 679, size 0	001163	157,-
Double Recessed Lensboard M 679 size 0	001176	201,-
3x Recessed Lensboard M 679, size 0	001175	214,-
4x Recessed Lensboard M 67, size 0 for Apo-Digitar XL 5,6/35, Copal 0	001178	305,-
Recessed Lensboard M 679, size 1 / Rollei Shutter	001164	179,-
Double Rec. Lensboard M 679, size 1 / Rollei Shutter	001174	217,-
3x Recessed Lensboard M 679, size 1 / Rollei Shutter	001177	225,-
Lensboard Adapter M 679 / Technika 45 lensboard	001100	361,-
Systainer M 679	022491	210,-
Systainer II M 679 for Accessories	022492	222,-
Operating Manual M 679 German	025104	5,-
Operating Manual M 679 English	025105	5,-
For further accessories see page 5.		

LINHOF M 679CS ORDERING INFORMATION FOR BASIC EQUIPMENT SYSTEM M 679cs

Linhof M 679cs incl. bellows, front and rear standard, with integrated benchholder with stepless lateral levelling, without lens and back	000117	6.159,-
+ Wide-angle Bellows M 679 (recommended below 100 mm focus length)	002754	422,-
+ M 679 Groundglass back	001698-S	532,-
+ Groundglass scoring according to required format		
+ Format dial according to required format		
+ Adapter according to required rollfilm cassette or digital back		
+ Digital back or Rollfilm back		
+ Rapid Change Adapter Slide		
+ Accessories for imaging control		
+ Lenses on M 679 lensboards with shutter system (Copal or electronic)		
+ Filter Holder / Compendium		
+ Systainer	022491	210,-

Camera shown in compact position: Measurements only 170 x 153 x 294 mm.



The wide-angle bellows are double-folded permitting extreme extensions.



Lens and rear standard are steplessly moved in tilt segments around the vertical and horizontal axis for yaw-free camera movements. The camera remains stable at any displacement.

LINHOF M 679cs – FOR DIGITAL HIGH-END PHOTOGRAPHY

M 679cs – fully adjustable medium format camera up to format 6x9 cm for adaption of digital backs and different medium format rollfilm magazines. With integrated benchholder with stepless lateral levelling.

THE CAMERA FOR DIGITAL HIGH-END PHOTOGRAPHY ON LOCATION

Adjustable medium format camera up to 6x9 cm for adaption of all currently available digital backs as well as of various medium format rollfilm backs. Designed for architectural photography and high-end digital photography on location. The Techno uses Technika lensboards for lenses from 23 to 210 mm focal length. The accessories for the rear standard are identical with the accessories of the Linhof system camera M 679cs.

LINHOF TECHNO , camera incl. normal bellows, front and rear standard, without lens and back	000150	5.298,-
Wide-angle Bellows Techno	002755	289,-
Compendium	001925	375,-
Normal Bellows Techno (spare)	002751	318,-
Outdoor.case for Techno (suitable for camera body, 3 lenses and slide)	022493	299,-
Fast wind lever for rear standard at Linhof Techno and for 3D Micro	002770	98,-
For further accessories see page 5.		



Vertical shift at the rear standard and tilting of the lens standard for Scheimpflug rule.



*Fast wind lever for rear standard at Linhof Techno. Larger shifts can now be realized faster.
002770*

The Linhof Techno in compact position with wide-angle bellows.



The 3-track system permits extensions up to 250 mm, a prerequisite for long focal lenses or for close-up photography.



LINHOF TECHNO ORDERING INFORMATION FOR BASIC EQUIPMENT SYSTEM TECHNO

Linhof Techno, camera incl. normal bellows, front and rear standard, without lens and bac	000150	5.298,-
Groundglass back	001698-S	532,-
Groundglass scoring according to required format		
Techno Wide-angle Bellows (recommended below 90 mm focus length)		289,-
Adapter according to required rollfilm cassette or digital back		
Rollfilm cassette or Digital back		
Rapid Change Adapter Slide		
Accessories for imaging control		
Lenses on Technika lensboards with shutter system (Copal or electronic)		
Filter Holder / Compendium		
Fast wind lever for rear standard at Linhof Techno	002770	98,-
Outdoor.case, case for Techno	022493	299,-

M 679 Groundglass back	001698-S	532,-
Groundglass scoring 3x3*	021833-S	85,-
Groundglass scoring 6x6*	021834-S	85,-
Groundglass scoring 6x7*	021835-S	85,-
Groundglass scoring 6x8*	021836-S	85,-
Groundglass scoring 6x9*	021842-S	85,-
Groundglass scoring 24x36 / 36x63*	021837-S	85,-
Groundglass scoring 37x37 / 37x71*	021838-S	85,-
Groundglass scoring 37x37 / 37x71*	021840-S	85,-
Groundglass scoring 33x44*	021841-S	85,-
Groundglass scoring 53,9x40,4 (PhaseOne P65+)	021845-S	85,-
Groundglass scoring 56x36 / 71x56 (Leaf Afi 10 / Aptus 10)	021846-S	85,-
Groundglass scoring 49x37*	021850-S	698,-
Groundglass scoring 53,9x40,4*	021851-S	698,-
Groundglass scoring 56x36*	021852-S	698,-
Groundglass scoring 43,9x32,9*	021849-S	698,-
Groundglass scoring 72x88 (Anagramm)	021839	85,-
Fresnel Screen	002523	101,-
Basic Lighthood M 679*	002763-S	338,-
Magnifier Viewing System 8x8 for Basic Lighthood	002757	452,-
Bellows magnifier for M 679 and Techno	002758	409,-
Flexible shafts for M 679cs shift (2 pcs.)	002769	81,-
Polaroid Back M 679	001692	528,-
Super Rollex Rollfilm back 6x9 for M 679 and Techno	001520	1.220,-
M 679 Adapter for Hasselblad backs (V-System)	001694	452,-
M 679 Adapter for Mamiya RZ backs	001696	299,-
Multi Adapter for Mamiya RB, Mamiya 6x8 motor cassette, Linhof Rapid Rollex 6x7, Horseman 6x7/6x8/6x9	001695	545,-
Universal Adapter for camera adapter plates	001697	422,-
Universal Rapid Change Adapter Slide M 679 - 37x37 / 37x71 and 37x49 / 49x71	002766-S	1.692,-
Universal Rapid Change Adapter Slide (short)	002767-S	1.798,-
Stitching Slide for digital backs with live view for Linhof Techno and Linhof M679cs	002768-S	1.350,-
Groundglass Adapter for 002768-S	001690-S	550,-
Adapter plate for Hasselblad V	001700	456,-
Adapter plate for Hasselblad H	001701	456,-
Adapter plate for Mamiya 645 AF / AFD	001702	456,-
Adapter Linhof Kardan for M 679	001101	367,-
Adapter Sinar / Horseman for M 679	001102	367,-
Adapter Cambo for M 679	001103	367,-
Adapter plate for Hasselblad Finder	001104	210,-
Adapter plate for Acra Swiss Bino Tube on M 679*	001105-S	284,-
* For the former Groundglass back and Rapid Change Adapter Slides the same code numbers apply, however, without the added "S".		



STITCHING SLIDE FOR DIGITAL BACKS WITH LIVE VIEW

The extra short stitching slide now allows the benefits of stitching even when working in the live view mode. Integrated stops permit stitching: 2 shots enlarge the image size of digital chip backs (of 37x37 to 37x71 and of 37x49 to 49x71mm).
002768-S



GROUNDGLASS ADAPTER FOR 002768-S

For those users who also want the groundglass control, even when working with live view digital backs, a groundglass adapter for the stitching slide (code 002768-S) is available. The adapter can hold all ground-glasses of M 679cs and Techno System.
001690-S



GROUNDGLASS 43,9x32,9

This groundglass expands the Linhof range of quality ground-glasses for digital photography. Linhof quality ground-glasses are extremely fine-grained, have an integrated Fresnel screen and thereby offers a bright matte field.
021849-S



SUPER ROLLEX ROLLFILM BACK 6x9

for M 679 and Techno, format 6x9.
001520

Optimized for Camera Movements. Matching lensboards to be ordered.

Lens Type	Aperture / Focal Length	Shutter Type / Size	Code No.	Net Price Lens and Shutter	Front Mount Diameter / Filter Thread (mm)	Image Circle (mm)	Lensboard M 679	Net-Price Lensboard M 679	Lensboard Techno	Net-Price Lensboard Techno
Apo-Digitar XL**	5,6 / 35	Copal 0	000537	2.542,-	54 / 52	90	001178	305,-	001015	275,-
Apo-Digitar XL**	5,6 / 35	Schneider el.0	000535	3.192,-	54 / 52	90	001179	242,-	–	–
Apo-Digitar XL**	5,6 / 43	Copal 0	000946	2.524,-	63 / 58	110	001176	201,-	001143	101,-
Apo-Digitar XL**	5,6 / 43	Schneider el.0	000543	3.173,-	63 / 58	110	001163	157,-	001143	101,-
Apo-Digitar XL	5,6 / 47	Copal 0	000960	1.650,-	54 / 52	98	001176	201,-	001143	101,-
Apo-Digitar XL	5,6 / 47	Schneider el.0	000560	2.175,-	54 / 52	98	001176	201,-	001143	101,-
Apo-Digitar**	5,6 / 60	Copal 0	000984	2.566,-	65 / 62	120	001176	201,-	001143	101,-
Apo-Digitar**	5,6 / 60	Schneider el.0	000584	3.216,-	65 / 62	120	001176	201,-	001143	101,-
Apo-Digitar L	5,6 / 72	Copal 0	000958	1.614,-	43 / 40,5	90	001176	201,-	001143	101,-
Apo-Digitar L	5,6 / 72	Schneider el.0	000569	2.264,-	43 / 40,5	90	001176	201,-	001143	101,-
Apo-Digitar L	4,0 / 80	Copal 0	000962	1.147,-	42 / 40,5	90	001163	157,-	001143	101,-
Apo-Digitar L	4,0 / 80	Schneider el.0	000562	2.045,-	42 / 40,5	90	001163	157,-	001143	101,-
Apo-Digitar N	4,5 / 90	Copal 0	000964	1.073,-	42 / 40,5	100	001163	157,-	001143	101,-
Apo-Digitar N	4,5 / 90	Schneider el.0	000564	1.723,-	42 / 40,5	100	001163	157,-	001143	101,-
Apo-Digitar N asph.	5,6 / 120	Copal 0	000966	1.414,-	42 / 40,5	110	001160	110,-	001143	101,-
Apo-Digitar N asph.	5,6 / 120	Schneider el.0	000566	2.063,-	42 / 40,5	110	001160	110,-	001143	101,-
Apo-Digitar N	5,6 / 150	Copal 0	000968	1.584,-	42 / 40,5	110	001160	110,-	001143	101,-
Apo-Digitar N	5,6 / 150	Schneider el.0	000568	2.234,-	42 / 40,5	110	001160	110,-	001143	101,-
Apo-Digitar T	5,6 / 180	Copal 0	000974	1.604,-	58 / 55	120	001160	110,-	001143	101,-
Apo-Digitar T	5,6 / 180	Schneider el.0	000576	2.253,-	58 / 55	120	001160	110,-	001143	101,-
Makro:										
Apo-Makro Digitar	5,6 / 80	Copal 0	000963	1.395,-	42 / 40,5	80	001163	157,-	001143	101,-
Apo-Makro Digitar	5,6 / 80	Schneider el.0	000563	2.045,-	42 / 40,5	80	001163	157,-	001143	101,-

** Center filter see page 18.

Optimized for digital photography, in mechanical Copal or eShutter. Matching lensboards to be ordered.

Lens Type	Aperture / Focal Length	Shutter Type / Size	Code No.	Net Price Lens and Shutter	Front Mount Diameter / Filter Thread (mm)	Image Circle (mm)	Lensboard M 679	Net-Price Lensboard M 679	Lensboard Techno	Net-Price Lensboard Techno
HR Digaron-S**	5,6 / 23	Copal 0	000982	5.273,-	75 / 72	70	001175	214,-	001143	101,-
HR Digaron-S**	5,6 / 23	eShutter	000484-E	6.428,-	75 / 72	70	001175	214,-	001143	101,-
HR Digaron-S**	4,5 / 28	Copal 0	000980	4.747,-	75 / 72	70	001176	201,-	001143	101,-
HR Digaron-S**	4,5 / 28	eShutter	000483-E	5.903,-	75 / 72	70	001176	201,-		
HR Digaron-W**	4,0 / 32	Copal 0	000927	5.551,-	90 / 86	90	001176	201,-	001143	101,-
HR Digaron-W**	4,0 / 32	eShutter	000427-E	6.707,-	90 / 86	90	001176	201,-	001143	101,-
HR Digaron-S	4,0 / 35	Copal 0	000972	3.048,-	51 / 49	70	001175	214,-	001143	101,-
HR Digaron-S	4,0 / 35	eShutter	000472-E	4.204,-	51 / 49	70	001175	214,-	001143	101,-
HR Digaron-W	4,0 / 40	Copal 0	000983	3.379,-	70 / 67	90	001176	201,-	001143	101,-
HR Digaron-W	4,0 / 40	eShutter	000498-E	4.535,-	70 / 67	90	001176	201,-	001143	101,-
Apo-Sironar-digital**	4,5 / 45	Copal 0	000951	1.712,-	70 / 67	125	001176	201,-	001143	101,-
Apo-Sironar-digital**	4,5 / 45	eShutter	000451-E	2.868,-	70 / 67	125	001176	201,-	001143	101,-
HR Digaron-W	4,0 / 50	Copal 0	000948	3.386,-	70 / 67	90	001160	110,-	001143	101,-
HR Digaron-W	4,0 / 50	eShutter	000453-E	4.542,-	70 / 67	90	001160	110,-	001143	101,-
Apo-Sironar-digital	4,5 / 55	Copal 0	000952	1.809,-	70 / 67	125	001160	110,-	001143	101,-
Apo-Sironar-digital	4,5 / 55	eShutter	000452-E	2.965,-	70 / 67	125	001160	110,-	001143	101,-
HR Digaron-S	4,0 / 60	Copal 0	000971	2.298,-	51 / 49	70	001176	201,-	001143	101,-
HR Digaron-S	4,0 / 60	eShutter	000471-E	3.454,-	51 / 49	70	001176	201,-	001143	101,-
HR Digaron-W	5,6 / 70	Copal 0	000953	2.069,-	60 / 58	100	001160	110,-	001143	101,-
HR Digaron-W	5,6 / 70	eShutter	000469-E	3.225,-	60 / 58	100	001160	110,-	001143	101,-
HR Digaron-S/ W	5,6 / 90	Copal 0	000919	4.225,-	75 / 72	120	001160	110,-	001143	101,-
HR Digaron-S/ W	5,6 / 90	eShutter	000419-E	5.381,-	75 / 72	120	001160	110,-	001143	101,-
HR Digaron-S	4,0 / 100	Copal 0	000973	2.271,-	51 / 49	70	001160	110,-	001143	101,-
HR Digaron-S	4,0 / 100	eShutter	000473-E	3.427,-	51 / 49	70	001160	110,-	001143	101,-
HR Digaron-S	5,6 / 180	Copal 0	000981	2.886,-	70 / 67	80	001160	110,-	001143	101,-
HR Digaron-S	5,6 / 180	eShutter	000482-E	4.042,-	70 / 67	80	001160	110,-	001143	101,-
Macro:										
Apo-Macro-Sironar digital	5,6 / 120	Copal 0	000970	1.417,-	51 / 49	150	001160	110,-	001143	101,-
Apo-Macro-Sironar digital	5,6 / 120	eShutter	000470-E	2.573,-	51 / 49	150	001160	110,-	001143	101,-

** Center filter see page 18.

MASTER TECHNIKA classic

The classical tool of lasting value for the creative as well as the technical photographer who needs a reliable large format system that masters any assignment with professional efficiency. The highly versatile dropped design in the format 4x5 in. offers full adjustment capabilities. Its unique combination of compact dimensions and extraordinary versatility makes it equally suitable for hand-held focused action shots and carefully composed studio subjects.

MASTER TECHNIKA 45 , 4x5 in. without lens	000054	6.299,-
Anatomical Grip 45, left, with 17 in. cable release	002549	360,-
Cable release 430 mm, T-lock + turning nipple (spare)	002430	31,-
Anatomical Grip, right	002552	315,-
Fresnel Screen 45	002522	119,-
Multifocus Optical Viewfinder 45M with mask 4x5"	001447	995,-
Further masks: 9x12/ 001379, 4x5/ 001385, 6x12/ 001444, 6x9/ 001381, 6x7/ 001382, 6x7 (Rapid-Rollex)/ 001448	each	95,-
Camera Neck Strap	022610	55,-
Lens Coupling - up to 3 lenses f 72 – 400 mm when ordered with camera, no charge.		
Coupling cost MT 45 additional lenses, each	001716	147,-
Coupling cost MT 45, customer-owned lens, each (The camera with all previously coupled lenses has to be sent in.)	001717	284,-
mm-Scale	101145	18,-
Compendium Lensshade Master Technika	001926	398,-
Compendium Filter Holder M 95x1 / 10x10 cm	001933	249,-
Vignetting Mask Holder for Compendium + 4 masks	001932	101,-
Aluminum Case Master Technika (44x44x18 cm)	022457	598,-
Universal-Photobag (König)	022496	562,-
Insert for Universal-Photobag, spare (König)	022490	upon request
Recessed Technika lensboard with helical focusing mount for		
– Super-Angulon XL 5,6 / 38	001036	624,-
– Super-Angulon XL 5,6 / 47	001037	624,-
– Super-Angulon XL 5,6 / 58	001038	624,-
Mounting of lenses in factory only.		



The Technika is a view camera offering all possibilities of image composing with sophisticated mechanical adjustment facilities for perspective corrections.



The Master Technika classic can be equipped with a Multi-Focus Optical Viewfinder for exact control of the image composition complemented by a lens-coupled multi-focus coincidence type range finder system for focus control without groundglass.

Aluminum Case Master Technika. Modified and covering more comfort in handling. The robust camera case protects the valuable Technika equipment at outdoor activity and also provides ideal features as a depository.



MASTER TECHNIKA 3000



The built-in wide-angle focusing track can now comfortably be used by a turning knob which is placed at the outer right side of the camera body. For extremely short focal lengths 38, 47 and 58 mm one infinity stop is provided for all 3 focal lengths thanks to individual lensboard adjustments. The baseboard can now be dropped to a forth notch enabling vertical images without vignetting.

MASTER TECHNIKA 3000 , 4x5 without lens	000130	5.979,-
Anatomical Grip 45, left, with 17 in. cable release	002549	360,-
Cable release 430 mm, T-lock + turning nipple (spare)	002430	31,-
Fresnel Screen 45	002522	119,-
Camera Neck Strap	022610	55,-
Compendium Lensshade Master Technika	001926	398,-
Compendium Filter Holder M 95x1/ 10x10 cm	001933	249,-
Vignetting Mask Holder for Compendium + 4 mask	001932	101,-
Rapid Change Adapter Slide for Master Technika (Adapter Plates see page 4.)	001618	2.229,-
Aluminum Case Master Technika (44x44x18 cm)	022457	598,-
Universal-Photobag (König)	022496	562,-
Insert for Universal-Photobag, spare (König)	022490	upon request



The baseboard can be dropped to a forth notch enabling vertical images without vignetting.



Linhof Master Technika – perfectly protected, completely closed.



The combination of direct and indirect adjustments will result in extreme camera displacements normally associated with monorail systems only.



The Rapid Change Adapter Slide increases the use of the Master Technika for digital imaging. 001618

The Technikardan perfectly combines the compactness of the classic Linhof Technika dropped design and the optical bench versatility of the Kardan series. It is a compact and mobile camera system designed for the demanding Pro who needs to travel light but also wants to exploit all the possibilities of a fully adjustable viewcamera system. The disengageable click-stops assure positive zero settings for faster operation.

TECHNIKARDAN S 23, 2x3 in. without lens	000107	3.750,-
Fresnel Screen 23	002566	101,-
Basic Lighthood 23	001611	410,-
Magnifier Viewing System 8x8 for Basic Lighthood	002757	452,-
Wide-Angle Bellows TK 23	002724	269,-
Compendium Lensshade TK	001931	398,-
Vignetting Mask Holder for Compendium + 4 masks	001932	101,-
Compendium Filter Holder M 95x1 / 10x10 cm	001933	249,-
Tele/Macro Bracket for TK 23	002740	225,-
Universal-Digi-Adapter 23 for Camera Adapter plates	001691	245,-
Adapter platte for Hasselblad V	001700	456,-
Adapter plate for Hasselblad H	001701	456,-
Adapter plate for Mamiya 645 AF / AFD	001702	456,-
Aluminum Case TK	022481	452,-
Groundglass 23 / cm-grid / scoring 6x7 cm	021807	68,-
Groundglass 23 / cm-grid / scoring 6x7 / clear center spot	021813	74,-
Folding Focusing Hood 23 (metric table)	001613	257,-
Right Angle Reflex Attachment 23	002629	360,-
Focusing Bellows 23	002504	448,-
Adapter for Arca Suisse Bino Tube for TK 23	001684	171,-
Super Rollex Rollfilm Backs 23		
Super Rollex 23 / 6x7 cm, 10 expos. on rollfilm 120	001460	1.220,-
Super Rollex 23 / 6x9 cm, 8 expos. on rollfilm 120	001524	1.220,-
Rapid Rollex 23 / 6x9 cm, 8 expos. on rollfilm 120	001566	upon request



Technikardan S 23 - lightweight, fully adjustable, minimum transportation volume, ideal for the Pro on the road.



Long direct parallel shifts for avoiding converging lines in architectural and interior work.



Omnidirectional movements far beyond the limits of the image circle of lenses used. 10 heavy duty hardened steel levers guarantee precise lockings.

TECHNIKARDAN S 45

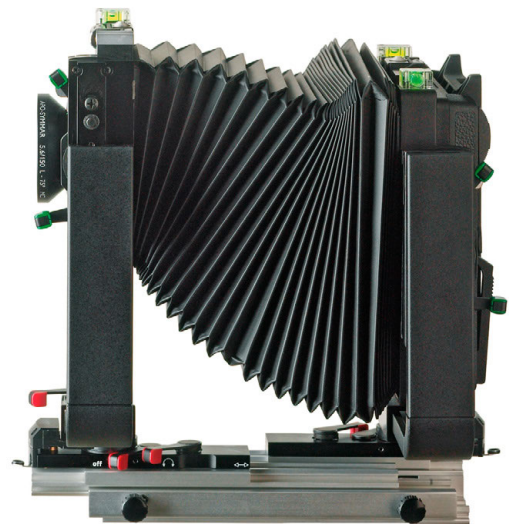


The Technikardan perfectly combines the compactness of the classic Linhof Technika dropped design and the optical bench versatility of the Kardan series. It is a compact and mobile camera system designed for the demanding Pro who needs to travel light but also wants to exploit all the possibilities of a fully adjustable viewcamera system. The disengageable click-stops assure positive zero settings for faster operation.

TECHNIKARDAN S 4x5 without lens	000108	3.980,-
Fresnel Screen 45	002522	119,-
Wide-Angle Bellows TK 45	002723	452,-
Compendium Lensshade TK	001931	398,-
Vignetting Mask Holder for Comp. + 4 masks	001932	101,-
Compendium Filter Holder M 95x1 / 10x10 cm	001933	249,-
Tele/Macro Bracket for TK 45	002741	225,-
Aluminum Case TK	022481	452,-

Groundglass 45 / cm-grid / Multi format scoring	021805	80,-
Groundglass 45 / cm-grid, without format scoring	021804	20,-
Groundglass 45 / cm-grid / clear center spot	021812	90,-
Folding Focusing Hood 45 (metric / feet table)	001612	318,-
Right Angle Reflex Attachment 45	002628	565,-
Focusing Bellows 45	002503	452,-
Double Cutfilm Holder 4x5	021479*	upon request

SUPER ROLLEX ROLLFILM 45 BACKS		
- Super Rollex 45 / 6x7 cm, 10 expos. on rollfilm 120	001459	1.220,-
- Super Rollex 45 / 6x9 cm, 8 expos. on rollfilm 120	001523	1.220,-
Techno Rollex Rollfilm 45 Back Format 2 1/4 x 4 3/4 in. / 6x12 cm, 6 expos. on rollfilm 120, 12 expos. on rollfilm 220	001560	upon request
Rapid-Rollex Slide-in 45 / 6x7 cm Rollfilm Magazine 10 expos. 2 1/4 x 2 2/3 in. / 6x7 cm	001567	upon request



Parallel Shift with front standard.



*Groundglass 45 / cm-grid and Multi format scoring.
021805*



The perfect Field camera with Wide-Angle Bellows.

Optical bench with direct displacements for 4x5" sheet film or for working with Linhof Rollfilm Backs. The Kardan re – the ideal entry to professional large format techniques. "re" stands for the modified version of "E" with micro drive focusing, improved operating elements and new scales. Adjustment facilities: direct large displacements, lateral and vertical shift at front and rear standard, vertical and horizontal tilt.

KARDAN re 45 , 4x5 in. Optical bench camera with front and rear standard, Kardan back with Groundglass, without lens	000102	1.902,-
Fresnel Screen 45	002522	119,-
Set of 85 mm / 3.3 in. Extension Rods for increased rise	002606	88,-
Kardan Wide-angle Bellows 45, 210 mm	002584	452,-
Levelling Pan/Tilt Head 77 base	003667	562,-
Compendium Lensshade Kardan	001927	398,-
Compendium Filter Holder M 95x1 / 10x10 cm	001933	249,-
Vignetting Mask Holder for Compendium + 4 masks	001932	101,-

Groundglass 45 / cm-grid / Multi format scoring	021805	80,-
Groundglass 45 / cm-grid / without format scoring	021804	20,-
Groundglass 45 / cm-grid / clear center spot	021812	90,-
Folding Focusing Hood 45 (metric / feet table)	001612	318,-
Right Angle Reflex Attachment 45	002628	565,-
Focusing Bellows 45	002503	452,-
Double Cutfilm Holder 4x5	021479*	upon request

SUPER ROLLEX ROLLFILM 45 BACKS		
- Super Rollex 45 / 6x7 cm, 10 expos. on rollfilm 120	001459	1.220,-
- Super Rollex 45 / 6x9 cm, 8 expos. on rollfilm 120	001523	1.220,-
Techno Rollex Rollfilm 45 Back Format 2 1/4 x 4 3/4 in. / 6x12 cm, 6 expos. on rollfilm 120, 12 expos. on rollfilm 220	001560	upon request
Rapid Rollex 45 / 6x7 cm, Slide-in Rollfilm Magazine 10 expos. 2 1/4 x 2 2/3 in. / 6x7 cm	001567	upon request

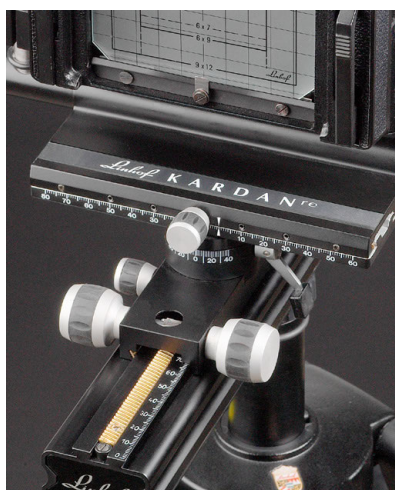


Extreme vertical shift and parallel adjustment even exceeding the image circle of the lenses used for avoiding converging lines. Highly rigid stability in any displaced position. For higher frontshifts take extra screw-in Extension Rods (002606).



Extreme tilts on both standards permit Scheimpflug-type sharpness distribution control. A central tilt axis on the lens standard simplifies settings without image drift.

Play-free solid brass micro-drive for extremely smooth focusing of the camera on the monorail. The Multi-Format Groundglass facilitates the selection of the image format - from 6 x 7 to 4 x 5.



*Levelling Pan/Tilt Head for Kardan re / GT / GTL
003667, 003668*

LENSES / RECOMMENDED LENSBOARDS 58 – 400 mm



See also page 6 and 7: Lenses for digital photography for Linhof M 679 and Techno

Lens Type	Aperture / Focal Length	Shutter Type / Size	Code No.	Net Price Lens and Shutter	Front Mount Diameter / Filter Thread (mm)	Image Circle (mm)	Lensboard Master Technika classic	Lensboard Master Technika 2000/3000	Lensboard Technikardan 6x9	Lensboard Technikardan 4x5	Lensboard Kardan
Super-Angulon XL**	5,6 / 58	Copal 0	000868	upon request	70 / 67	166	*	001159	001143	001143	001090
Grandagon N**	4,5 / 65	Copal 0	000830	upon request	60 / 58	170	*	001159	001143	001143	001090
Super-Angulon XL**	5,6 / 72	Copal 0	000901	2.008,-	100 / 95	226	001015	001015	001143	001143	001090
Super-Symmar XL Asph.**	4,5 / 80	Copal 0	000600	upon request	70 / 67	211	001047	001047	001143	001143	001090
Super-Angulon XL**	5,6 / 90	Copal 0	000873	2.324,-	100 / 95	259	001015	001015	001143	001143	001090
Grandagon N**	4,5 / 90	Copal 1	000834	upon request	85 / 82	236	001026	001026	001026	001026	001091
Grandagon N**	6,8 / 90	Copal 0	000836	upon request	70 / 67	221	001015	001015	001143	001143	001090
Apo-Sironar S	5,6 / 100	Copal 0	000861	upon request	51 / 49	155	001015	001015	001143	001143	001080
Apo-Symmar L	5,6 / 120	Copal 0	000633	1.057,-	54 / 52	189	001047	001047	001143	001143	001080
Apo-Sironar S	5,6 / 135	Copal 0	000874	1.420,-	51 / 49	208	001015	001015	001143	001143	001080
Apo-Symmar L	5,6 / 150	Copal 0	000641	1.246,-	60 / 58	233	001015	001015	001143	001143	001080
Apo-Sironar S	5,6 / 150	Copal 0	000876	1.436,-	51 / 49	231	001015	001015	001143	001143	001080
Apo-Sironar S	5,6 / 180	Copal 1	000878	1.479,-	70 / 67	276	001026	001026	001026	001026	001081
Apo-Symmar L	5,6 / 210	Copal 1	000646	1.686,-	80 / 77	321	001026	001026	001026	001026	001081
Apo-Sironar S	5,6 / 210	Copal 1	000880	upon request	75 / 72	305	001026	001026	001026	001026	001081
Apo-Sironar S	5,6 / 240	Copal 3	000882	upon request	90 / 86	372	001059z	001059z	001059z	001059z	001083
Tele-Xenar	5,6 / 250	Copal 1	000969	1.649,-	86 / 82	190	001026	001026	001026	001026	001081
Apo-Sironar S	6,8 / 360	Copal 3	000886	upon request	117 / 112	468					001083
Apo-Tele-Xenar Compur	5,6 / 400	Copal 3	000626	upon request	85 / 82	250	001119z	001119z		001119	001083
<p>HIGH PERFORMANCE LENSE FOR CLOSE-UP AND MACRO WORK Correction optimized for reproduction ratio from 1:3 to 3:1, Image Circle (mm) with f-stop 22</p>											
Apo-Macro-Sironar	5,6 / 180	Copal 1	000905	upon request	70 / 67	415 (1:1)	001026	001026	001026	001026	001081

When ordering different lens combinations for one camera either with recessed lensboards (only available with cable release quicksocket) or with flat lensboards we strongly recommend the cable release quicksocket facility too.

* Recessed Technika lensboard with helical focusing mount for wide-angle lenses – see page 15.

** Center filter see page 18.



Apo-Symmar L 5,6 / 150 with Copal 0 (000641) on Lensboard (001015) with cable release quicksocket.

LENSBOARDS

TECHNIKA 23 LENSBOARDS (74x81mm) for Technika 23 since 1962:		
Flat Lensboard 23 with center hole	001001	101,-
– with cutout Copal 0 with cable release socket for wide-angle lenses 55/58 a. 65 mm on Technika 23	001158	143,-
– with cutout for Compur / Copal 1	001106	110,-
TECHNIKA 45 LENSBOARDS (96x99 mm) for Technikardan 23 / 45 a. Master Technika 45 without cable release quicksocket		
Flat Lensboard 45 with center hole	001013	101,-
– with cutout for Compur / Copal 0	001143	101,-
– with spacer tube for Compur / Copal 0	001159	225,-
– with cutout for Compur / Copal 1	001026	110,-
– with cutout for Compur 3	001059	104,-
– with cutout for Copal 3	001119	104,-
WITH CABLE RELEASE SOCKET RECESSED LENSBOARD		
– with cutout for Copal 0 – 12 mm recessed “Comfort”	001015	275,-
– with cutout for Copal 0 – 6 mm recessed	001047	242,-
– with cutout for Copal 0 – 21 mm recessed	001035	287,-
WITH CABLE RELEASE SOCKET FLAT LENSBOARDS		
– with cutout for Compur 0	001017	153,-
– with cutout for Copal 0	001120	153,-
– with cutout for Compur 1	001126	155,-
– with cutout for Copal 1	001121	155,-
TECHNIKA 57 LENSBOARDS (129x129 mm) for Technika 5x7 cameras		
Flat Lensboard 57 (remaining stock), specify shutter size requested	001040	123,-
KARDAN LENS PANELS (162x162 mm) for Kardan re / E / GT / GTL		
Flat Kardan Lensboard with hole size 0	001080	107,-
Flat Kardan Lensboard with hole size 1	001081	107,-
Flat Kardan Lensboard with hole size 3	001083	107,-
Recessed Kardan Lensboard with hole size 0	001090	242,-
Recessed Kardan Lensboard with hole size 1	001091	242,-
Double rec. Kardan Lensboard with hole size 0 or 1	001094	269,-
REDUCING LENSBOARD ADAPTERS for Kardan re / E / GT / GTL (for use of Technika Lensboards with Kardan cameras)		
Flat Kardan Lensboard Adapter 23	001088	214,-
Recessed Kardan Lensboard Adapter 23	001092	242,-
Flat Kardan Lensboard Adapter 45	001087	186,-
Recessed Kardan Lensboard Adapter 45	001093	299,-
Technika Reducing Lensboard Adapter 45 / 23 (permits the use of Technika 23 lensboards with Technikardan and Master Technika cameras.)	001070	299,-



*Flat Technika 45 Lensboard
with Cable Release Socket
and cutout for Copal 1.
001121*



*Flat Technika 45 Lensboard
with Cable Release Socket
and cutout for Copal 1.
001026*



*Recessed Technika 45
Lensboard with
Cable Release Socket
and cutout for Copal 0,
6 mm recessed.
001047*

CABLE RELEASES AND ACCESSORIES		
Cable release 340 mm, T-lock + turning nipple	002429	29,-
Cable release 430 mm, T-lock + turning nipple	002430	31,-
Cable release 530 mm, T-lock + turning nipple	002431	31,-
Cable release 530 mm, T-lock + special unthreaded nipple for cable release quicksocket	002440	35,-
Cable release 750 mm, T-lock + turning nipple	002434	33,-
Profi cable release 700 mm	022767	41,-
Screw-on nipple for cable release quicksocket	041066	4,-
Cable release extension 50 mm for Copal	100802	30,-
Cable release extension 100 mm for Copal	100247	30,-
Cable release extension 100 mm for Prontor Professional	100811	30,-
CABLE RELEASE QUICKSOCKET FOR NEW RECESSED LENSBOARDS (Repair Items)		
Cable release quicksocket	045296*	25,-
Cable release intermediate part for quicksocket	100700*	25,-
Angular cable release quicksocket	300063*	18,-
Angular flash contact	022780*	39,-
CABLE RELEASE QUICKSOCKET FOR FLAT LENSBOARDS SHUTTER, SIZE 0 AND 1 (Repair Items)		
Cable release quicksocket	045298*	25,-
Guide bushing	058180*	6,-
Release pin	030283*	1,-
RECESSED TECHNIKA LENSBOARD WITH HELICAL FOCUSING MOUNT for		
– Super-Angulon XL 5,6 / 38	001036	624,-
– Super-Angulon XL 5,6 / 47	001037	624,-
– Super-Angulon XL 5,6 / 58	001038	624,-
MASTER TECHNIKA 3000 LENSBOARD (SCHNEIDER) with cable release quicksocket for		
– Super-Angulon XL 5,6 / 38	001138	243,-
– Super-Angulon XL 5,6 / 47	001147	169,-
– Super-Angulon XL 5,6 / 58	001148	226,-
MASTER TECHNIKA 3000 LENSBOARD (RODENSTOCK) with cable release quicksocket for		
– Apo-Grandagon 4,5 / 35	001015	275,-
– Apo-Grandagon 4,5 / 45	001045	164,-
– Apo-Grandagon 4,5 / 55	001159	225,-

SCHNEIDER ELECTRONIC-SYSTEM		
Electronic Shutter 0 NK0-118	022500*	1.100,-
Power Suppl International	022515*	160,-
Adapter Cable NK0-118 for Imacon	022517*	300,-
SC Imacon Ixpress, Control Cable for Shuttercontrol	022528*	126,-
SC Power Supply without battery	022526*	upon request
SC Cable Hasselblad Interface	022529*	67,-
Cable Euro plug	022536*	10,-
Cable UK plug	022537*	10,-
Cable US and Japan plug	022538*	10,-
Hasselblad Interface Hasselblad V-Adapter	022539*	63,-
Adapter Cable Imacon Ixpress CF	022540*	27,-
USB Interface (complete) (incl. Software PC and Mac, 5 m USB Cable 022533, Shutter Release Cable with Key 022534, Synchro Cable 022535). Additional recommended Power Supply 022515.	022532*	808,-
USB Cable, 5 m (spare)	022533*	10,-
Shutter Release Cable with Key	022534*	24,-
Synchro Cable	022535*	30,-
RODENSTOCK eSHUTTER		
Rodenstock eShutter	022541*	1.646,-
Interface Box / eShutter Control	022542*	1.182,-
Mounting for Schneider lenses in Rodenstock eShutter	022545*	325,-



Recessed Technika Lensboard with Helical Focusing Mount for Super-Angulon XL 5,6 / 58. 001038

TECHNORAMA 612 pc II



TECHNORAMA 612pc II (6x12 cm) body only, with neck strap	000099	2.924,-
Technorama 612 Super-Angulon XL 5,6 / 58	000894	upon request
Center filter for Super-Angulon XL 5,6 / 58	022282	304,-
Technorama 612 Optical Viewfinder for f 58 / 120	001310	698,-
Technorama 612 Apo-Symmar L 5,6 / 120	000776	upon request
Dark slide 612 (spare)	056340	31,-
Aluminum Case Technorama 612pc II, custom fitted (for camera and lenses)	022471	398,-
Universal-Photobag (König)	022497	530,-
Insert for Universal-Photobag, spare (König)	022498	upon request



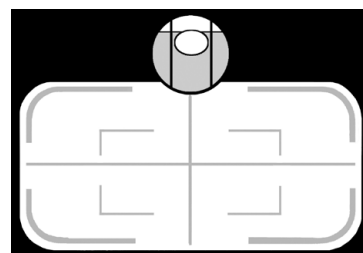
For added protection during transport we recommend to keep the camera always in its custom-designed sturdy aluminum case 022471 accepting a camera with lenses plus viewfinders. 022471



The Universal-Photobag – watertight, with attachable rucksack carrying belts for Master Technika or Technorama cameras. 022497



The optical viewfinder for both lenses 58 and 120 mm is part of the system camera Linhof Technorama 612 pc II.



Visible in the viewfinder: Spirit level, bright line frames for picture sections 58 and 120 mm showing the built-in vertical shift and reference cross.

TECHNORAMA 617s III (6x17 cm) body only, with neck strap	000113	3.495,-
Technorama Super-Angulon XL 5,6 / 72	000909	upon request
Technorama Viewfinder 617s III f 72	001301	660,-
Center Filter for f 72	022302	462,-
Protection Ring for SA XL 5,6 / 72 and 5,6 / 90	001903	242,-
Technorama Super-Angulon XL 5,6 / 90	000910	4.365,-
Technorama Viewfinder 617s III f 90	001302	660,-
Center Filter for f 72	022283	467,-
Protection Ring for SA XL 5,6 / 72 and 5,6 / 90	001903	242,-
Technorama Apo-Symmar 5,6 / 180	000911	2.889,-
Technorama Viewfinder 617s III f 180	001303	660,-
Technorama Tele-Xenar 5,6 / 250	000915	upon request
Technorama Viewfinder 617s III f 250	001304	660,-
Protection Ring for Tele-Xenar 5,6 / 250	001904	342,-
Technorama T 617 Shift Adapter for focal lengths 72, 90, 110 mm	001650	1.760,-
T 617 Shift Lens Super-Angulon XL 5,6 / 72 mm	000943	upon request
T 617 Shift Lens Super-Angulon XL 5,6 / 90 mm	000944	3.635,-
Conversion set T 617 XL 5,6 / 72 for Shift Adapter	001743	727,-
Conversion set T 617 XL 5,6 / 90 for Shift Adapter	001744	731,-
Technorama 617 Filter Holder	001906	155,-
Groundglass Back T 617	001640	829,-
Linhof Magnifier Adapter for Groundglass Back T 617	022621	63,-
Magnifier 3x, Schneider	022612	232,-
Dark slide 617 (spare)	101243	31,-
Aluminum Case Technorama 617s III, custom fitted (for camera with wide-angle lens plus normal lens or other wide-angle lens plus Groundglass Back)	022489	465,-
Universal-Photobag (König)	022497	530,-
Insert for Universal-Photobag (spare)	022499	upon request



TECHNORAMA 617s III

The rugged die-cast professional camera for reliable performance without the need of batteries under the most rugged working conditions „on location“ such as travel photography, expeditions, adventure. Ideal for hand-held use producing professional large format quality which can normally only be achieved with 5x7 in. large format cameras (illustration: with Technorama Super-Angulon XL 5,6 / 72 and Protection Ring).



The Linhof Shift Adapter with wide-angle lenses offering an extremely wide shift range of 30 mm (15 mm each up and down). The Shift Adapter can be used with all existing Technorama bodies accepting interchangeable lenses. Image control with Groundglass Back T 617 + Magnifier Adapter + Magnifier.



*Technorama 617s system:
Body, interchangeable lenses and
relating viewfinders.*

ACCESSORIES 4x5/9x12

Groundglass 45 / cm-grid / Multi format scoring	021805	80,-
Groundglass 45 / cm-grid / without format scoring	021804	20,-
Groundglass 4x5 / AMS System / cm-grid	021831	96,-
Groundglass 45 / cm-grid / clear center spot	021812	90,-
Fresnel Screen 45	002522	119,-
Folding Focusing Hood 45 (metric / feet table)	001612	318,-
Right Angle Reflex Attachment 45	002628	565,-
Focusing Bellows 45	002503	452,-
Hasselblad V Digi-Adapter Internat. Universal Back	001693	upon request
Groundglass Mask 45 / 24x36	001644	20,-
Groundglass Mask 45 / 37x37	001645	20,-
Groundglass Mask 45 / 4x5 cm	001646	20,-
Double Cutfilm Holder 4x5	021479*	upon request
SUPER ROLLEX ROLLFILM 45 BACKS		
- Super Rollex 45 / 6x7 cm, 10 expos. on rollfilm 120	001459	1.220,-
- Super Rollex 45 / 6x9 cm, 8 expos. on rollfilm 120	001523	1.220,-
Techno Rollex Rollfilm 45 Back Format 2 1/4 x 4 3/4 in. / 6x12 cm, 6 expos. on rollfilm 120, 12 expos. on rollfilm 220	001560	upon request
Rapid Rollex 45 / 6x7 cm, Slide-in Rollfilm Magazine 10 expos. 2 1/4 x 2 2/3 in. / 6x7 cm	001567	upon request



Linhof Super Rollex Backs for Technikardan S 23 und 4x5 cameras with International Back: Efficient handling with rollfilm for formats 6x7 and 6x9 cm. The all-metal Linhof Super Rollex Backs for optimum film flatness with rapid winding lever in conjunction with a sophisticated ball bearing freewheel transport system.

ACCESSORIES 13x18/5x7

Groundglass 57 / cm-grid, AMS, mm scale	021830	upon request
Groundglass 57 / 13x18 / cm-grid / scoring 5x7 in. / clear center spot	021808	101,-
Fresnel Screen 57 / 13x18	021822	153,-
Right Angle Reflex Attachment 57	002507	473,-
Focusing Bellows 57	002505	560,-

ACCESSORIES 18x24/8x10

Groundglass 8x10 / cm-grid / add. scoring 18x24 cm	021816	225,-
Fresnel Screen 8x10	022561	232,-
Focusing Bellows 8x10	002735	630,-
Double Cutfilm Holder 8x10	021468*	upon request

MISCELLANEOUS ACCESSORIES

Dual Spirit Level	002599	33,-
Linhof Focusing Cloth 120x120 cm	022620	112,-
Compendium Lensshade TK		
Vignetting Mask Holder for Compendium + 4 masks	001932	101,-
Compendium Filter Holder M 95x1 / 10x10 cm	001933	249,-
Compendium Lensshade for		
- Kardan re, E, GT	001927	398,-
- Master Technika 4x5	001926	398,-
add. recommended for 001927 a. 001926:		
Compendium Filter Holder M 95x1 / 10x10 cm	001933	249,-
Vignetting Mask Holder for Compendium + 4 masks	001932	101,-
Filter Folding Frames (set of 3) 10x10 cm / 4x4 in.	002013	25,-

CENTER FILTER

for Wide-angle Lenses, Screw-in Filters assorted in accordance with Ø of the lenses

Ø M 52	for Apo-Digitar 5,6 / 35 XL	II F	022285	214,-
Ø M 58	for GRAN-N 4,5 / 65 + 6,8 / 75		022292	upon request
Ø M 58	for Apo-Digitar 5,6 / 43 XL	II i	022280	214,-
Ø M 62	for Apo-Digitar 5,6 / 60	II H	022290	214,-
Ø M 67	for SA 5,6 / 58 XL + SA 8 / 90 + SS 4,5 / 80 Asph. + SS 5,6 / 110 XL	III B	022282	304,-
Ø M 67	for Apo-Sironar digital 4,5 / 35 / 45 / 55		022301	506,-
Ø M 67	for GRAN-N 4,5 / 75 + 6,8 / 90		022306	upon request
Ø M 72	for HR Digaron-S 5,6 / 23 + 4,5 / 28		022295	646,-
Ø M 82	for GRAN-N 4,5 / 90 + 6,8 / 115		022291	upon request
Ø M 86	for HR Digaron-W 4 / 32		022296	712,-
Ø M 95	for SA 5,6 / 90 XL + 150 XL	IV A	022283	467,-
Ø M 95	for SA 5,6 / 72 XL	IV B	022302	462,-
Ø M 95	for Super Digitar 5,6 / 28 XL	IV D	022289	462,-
	for Apo-Digitar 5,6 / 24 XL Integral	II B	022307	upon request
	for Apo-Digitar 5,6 / 35 XL Integral	II G	022308	upon request

TRIPOD HEADS



Linhof 3D Micro Levelling Head with Quickfix I	003660	995,-
Angled device for Linhof 3D Micro with Quickfix I	003661-QF	275,-
Linhof 3D Micro, Levelling Head with dovetail-track for Arca, Novoflex etc.	003662	995,-
Angled device for Linhof 3D Micro w. dovetail-track	003661-D	275,-
Fast wind lever for rear standard at Linhof Techno and for 3D Micro	002770	98,-
3-Way Levelling Head I, 77 mm base	003663	465,-
3-D Levelling Head II with Quickfix I	003665	689,-
3-D Levelling Head II with with dovetail-track for Arca, Novoflex etc.	003666	689,-
Large Camera Screw 1/4" for 003663	051644	23,-
Large Camera Screw 3/8" for 003663	052709	23,-
Large Levelling Head 3/8", 77 mm base	003659	249,-
Large Levelling Head 1/4", 77 mm base	003664	249,-
Levelling Pan/Tilt Head 77 base for Kardan re / GT / GTL	003667	562,-
Levelling Pan/Tilt Head 90 base for Kardan re / GT / GTL	003668	583,-
Quickchange plate for levelling heads 003667/68	003853	76,-
Profi 3 Universal Pan/Tilt Head 90 base	003669	1.149,-
Quick-Change Plate (spare) f. Profi 3 Head 003669	003856	76,-
SPECIAL HEAVY DUTY HEAD Precision Micro Cradle Head with add. micro drives for extremely accurate pan and tilt control	003672	upon request

Linhof 3D Micro is designed for the use of precision cameras, especially the Linhof Techno, Master Technika and the Technorama systems. Also recommended for any precision camera requiring an accurate micro adjustment.



Linhof 3D Micro with Quickfix I 003660



Linhof 3D Micro with dovetail-track for Arca, Novoflex etc. 003662

The Angled Device expands the possibilities for the use of 3D Micro and allows vertical photographs for reproductions or shooting at close range.



Angled Device for Linhof 3D Micro with Quickfix I 003661-QF

3-D Levelling Head II allows a tilt of more than 180° even with heavier cameras. Due to the panoramic top plate individual pictures destined for panoramic photography can be set very accurately. The clamping lever, depending on the demand for convenient handling, can be altered to any position.



3-D Levelling Head II with Quickfix I 003665

Linhof 3-D Levelling Head II with dovetail-track for quick-change plates from Arca, Novoflex etc. 003666



Large Levelling Head, 77 mm base 003659, 003664



Levelling Pan/Tilt Head for Kardan re / GT / GTL 003667, 003668



Profi 3 Universal Pan/Tilt Head 003669

Profi Ballhead II, 63 mm base	003676	271,-
Profi Ballhead II Q, 63 mm base	003679	386,-
Profi Ballhead III, 80 mm base	003675	422,-
Profi Ballhead III Q, 80 mm base	003680	562,-
Profi Ballhead III, 90 mm base	003650	431,-
Panorama plate with Quickfix I for 003676, 003675, 003650	003673	339,-
Panorama plate with dovetail-track for Arca, Novoflex etc. for Ballheads 003676, 003675, 003650	003674	339,-

LINHOFF PRECISION BALLHEADS

Linhof precision ballheads for professional use. Calibrated friction control, oversized locking knobs for secure positioning without creating camera shifts. Pan movements separately locked. Instead of dual-thread top plate available with firmly fixed quicklock tripod connector.



Profi Ballhead II
003676

Profi Ballhead II Q
003679

Profi Ballhead III
80 mm base
003675

Profi Ballhead III,
90 mm base
003650

Profi Ballhead III Q,
80 mm base
003680



Panorama plate with Quickfix I
003673



Panorama plate with dovetail-track
003674



Panorama plate (003673) with Quickfix I Adapter Plate for 35 mm cameras (003878).

PANORAMA PLATE FOR LINHOFF BALLHEADS

Linhof offers a panorama plate as an accessory for the Linhof ballheads. These plates can be mounted instead of the existing top plate supplied with the Linhof ballheads. The field of applications for the ball heads now increases. The camera angle can be controlled via two spirit levels.

Panorama plate with Quickfix I (003673) with Profi Ballhead II (003676).



Twin Shank Pro Tripod Expert 81/186 cm	003317	498,-
Twin Shank Pro Tripod P, 81/186 cm	003333	510,-
Tripod Case for Twin Shank Pro, length 97 cm	023313	115,-
Heavy Duty Pro Tripod, 91/155 cm	003323	1.385,-
Tripod Case for Heavy Duty Pro Tripod + Profi 3, 105 cm	023308	158,-
Large Geared Centerpost for HD Pro Tripod 003323	003755	598,-
Tripod Case for HD Pro Tripod with centerpost, 120 cm	023309	165,-



Matching tripod carrying cases with zipper and shoulder strap made from durable fabrics in neutral shades. Please specify tripod model. Some models embroidered with Linhof logo.

HEAVY DUTY PRO TRIPOD

The classic and sturdiest 2-sectional heavy duty tripod for all applications. Robust twin-shank aluminum tubes with plastic covering. Extremely stable through oversized leg mount collar for vibration-free camera operation. Umbrella struts guarantee absolute fixed positioning even on smooth surfaces. Leg extension can be locked to any desired height by excentric clamps.



Heavy Duty Pro Tripod 003323, completed with Geared Centerpost 003755.

Large Geared Centerpost – accessory column with friction-adjustable, self-braking rack-and-pinion elevator drive. 003755



Twin Shank Pro Tripod Expert, min. height 81 cm, max. height 186 cm. 003333, 003317



Quickfix I Tripod Connector with Spirit Levels	003880	135,-
Quickfix I Adapter Plate (spare)	003875	32,-
Quickfix I Adapter Plate for 35 mm cameras	003878	32,-
Quickfix II Tripod Connector with Spirit Levels	003881	145,-
Quickfix II Adapter Plate (spare)	003877	33,-
Retaining Screw Quickfix 3/8"	056084	5,-
Retaining Screw Quickfix 1/4"	056325	5,-
Small Top Plate 42 mm dia.	003845	14,-
Large Top Plate 77 mm dia.	003753	18,-
Support Plate for Top Plate 77 mm	003871	13,-
Flat Tripod Top Plate 90 - 3/8"	031482	72,-
Flat Tripod Top Plate 90 - 1/4"	032965	72,-
Small Camera Screw 1/4"	003769	13,-
Small Camera Screw 3/8"	003773	13,-
Large Camera Screw 1/4"	003774	16,-
Large Camera Screw 3/8"	003775	16,-
Large Camera Screw 1/4" for 003663	051644	23,-
Large Camera Screw 3/8" for 003663	052709	23,-
R/A Outrigger Adapter Profi 3 + HD Pro Tripod	003776	375,-
Reducing Bushing 3/8" to 1/4"	004262	2,-
SPARE PARTS		
Rubber Foot for Lightweight Pro and Twin Shank Pro	034128	6,-
Washer (3x) for Rubber Foot / Lightweight Pro and Twin Shank Pro Tripods	004508	2,-
Rubber Foot for Heavy Duty Pro and Profi 3 Tripod	035544	6,-
Rubber Holder for 035544	035545	3,-
Washer (3x) for Rubber Foot Heavy Duty Pro and Profi 3 Tripod	004555	2,-



Quickfix I Tripod Connector
003880

Quickfix II Tripod Connector
003881



Quickfix I Adapter Plate
for 35 mm cameras
003878

LINHOFF QUICKFIX TRIPOD CONNECTOR

Only the dimensions of Linhof's quick-change adapters are different but neither quality nor features. Quickfix I + II are solid all-metal quick-change adapters for instant attachment of professional camera equipment and other instruments to the tripod. With spirit levels for camera orientation.



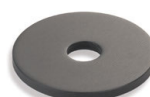
FLAT TRIPOD TOP PLATES
Fit into 90 mm clamp mount.
032965 – flat top 1/4"
031482 – flat top 3/8"



SMALL TOP PLATE 42
42 mm dia., with solid brass
camera screw 3/8" and 1/4".
003845



LARGE TOP PLATE 77
77 mm dia., with solid brass camera
screw 3/8" and 1/4".
003753



SUPPORT PLATE
Accessory washer for large top plate
for extra firm connection to the 35 mm
center columns when working with the
1/4" tripod bushing.
003871



REDUCING BUSHING
from 3/8" thread to 1/4"
004262



SMALL CAMERA SCREWS
003769 – small camera screw 1/4"
003773 – small camera screw 3/8"



LARGE CAMERA SCREWS
003774 – large camera screw 1/4"
003775 – large camera screw 3/8"

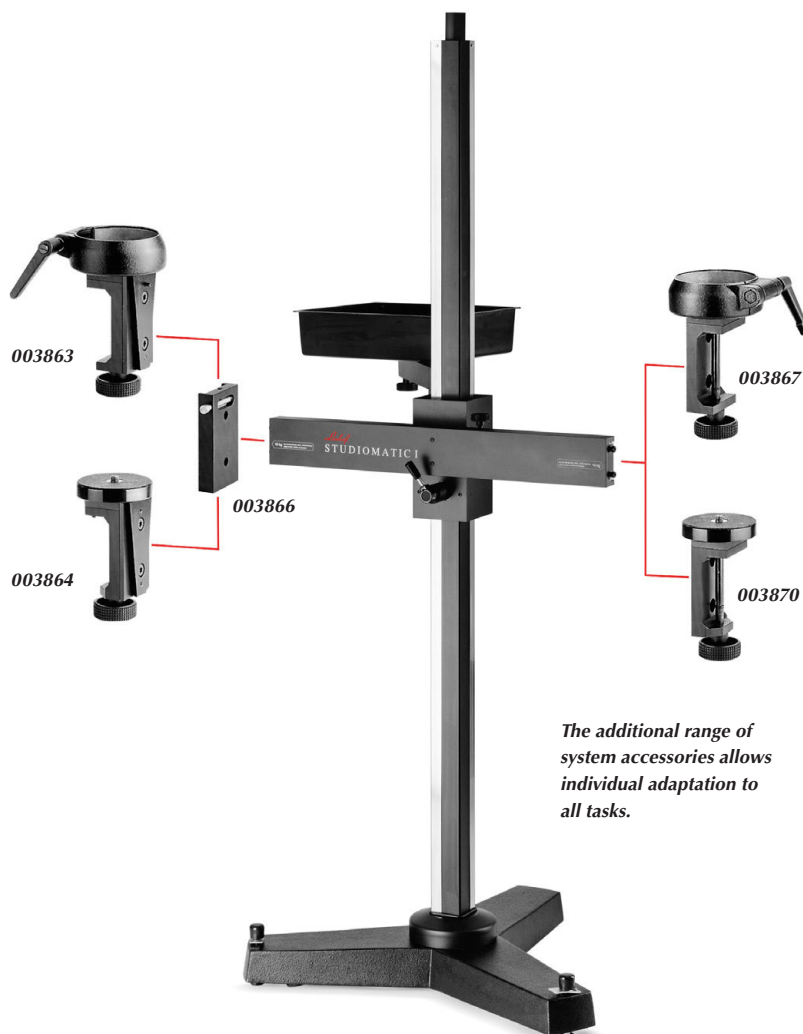
STUDIO STAND II , 80 / 150 cm / 31.5 x 49 in.	003431	2.036,-
Outrigger arm for Studio Stand II	003857	148,-
STUDIOMATIC I , 220 cm / 86 in. with outrigger arm and accessory tray	003467	3.546,-
Add. Counterweight 5 kg / 11 lb. for Studiomatic I	003872	98,-
ACCESSORIES FOR STUDIO STANDS		
Dovetail Retaining Bracket for Studiomatic I	003866	128,-
Clamp Mount 90 w/dovetail fitting for Studiomatic I	003863	249,-
Camera Top Plate 3/8" w/dovetail for Studiomatic I	003864	176,-
Clamp Mount 90 w/screw-on fitting for Studiomatic I	003867	182,-
Camera Top Plate 90 w/screw-on fitting 3/8" for Studiomatic I	003870	140,-
Accessory tray 30x40 cm / 12x16 in. 3/8"-bushing	003852	152,-



Studio Stand II with Outrigger arm (003857) and Accessory tray (003852).

STUDIO STAND II

Extremely stable vibration free studio stand, suitable for medium format camera equipment up to approx. 12 kg with fixed Large Geared Centerpost. Stand base with ball bearing casters. 90 mm diam. clamp mount for use by professional tripod heads or flat plates. Supplied with 90 mm dia. flat top plate with 3/8" screw (031482).



The additional range of system accessories allows individual adaptation to all tasks.

STUDIOMATIC I

Medium-weight stand with square profile column 7 cm, laterally adjustable outrigger, built-in counterweight, vertical adjustment with automatic safety brake. Dovetail fittings at either end of the crossarm can be installed to allow adaptation of accessories and camera mounts with matching retaining brackets. Maximum elevation of optical axis over 2 m, minimum elevation 57 cm. Smooth-running ball bearing casters are locked via foot-pedals. Accessory tray and outrigger arm included.

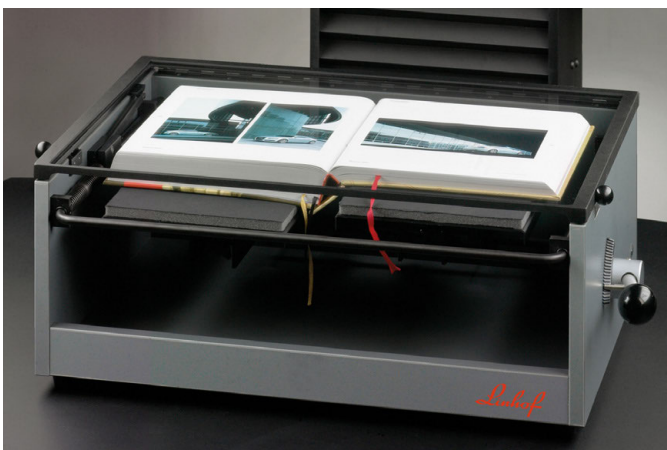
TECHNOPRO II Technopro II, Heavy-duty copy stand, basebord size 90x80 cm / 35x31 in., column height 180 cm / 71 in.	003015	2.740,-
Steel Table for Technopro II	003018	380,-
LINHOFF RD 1 Special vibrations-free Reproduction Camera 4x5 for adaptation of High End Digital Backs.	000140	3.625,-
Compendium for RD 1	001934	525,-
BOOK COPYING EASEL 34x50 cm / 14x20 in.	003090	2.507,-
Metal Loading Plate 32x48 cm / 12.5x19 in. for 003090	003235	78,-



LINHOFF RD 1
Vibration-free Reproduction Camera for analogue and digital Imaging.



TECHNOPRO II
Solid repro column as desk device or with special steel table.
For medium format or large format cameras with film or digital back.
Illustration: Linhof RD 1 (000140) with Compendium (001934) on
Technopro II (003015), below with 4x5 camera.



BOOK COPYING EASEL
The Linhof Book Copying Easel automatically adjusts the position of
the book so that despite different thickness the two halves lie perfectly
flat against the glass plate cover.



CAMERAS		
000054	6.299,-	MASTER TECHNIKA 4x5, without lens
000099	2.924,-	TECHNORAMA 612pc II, body only
000102	1.902,-	KARDAN re 4x5, without lens
000107	3.750,-	TECHNIKARDAN S 6x9, without lens
000108	3.980,-	TECHNIKARDAN S 4x5, without lens
000113	3.495,-	TECHNORAMA 617s III, body only
000117	6.159,-	LINHOF M 679cs, without lens and back
000130	5.979,-	MASTER TECHNIKA 3000, 4x5, without lens
000140	3.625,-	LINHOF RD 1, Reproduction Camera 4x5
000150	5.298,-	LINHOF TECHNO, without lens and back
LENSES		
000419-E	5.381,-	HR Digaron-S/W 5,6 / 90 eShutter
000427-E	6.707,-	HR Digaron-W 4,0 / 32 eShutter
000451-E	2.868,-	Apo-Sironar-digital 4,5 / 45 eShutter
000452-E	2.965,-	Apo-Sironar-digital 4,5 / 55 eShutter
000453-E	4.542,-	HR Digaron-W 4,5 / 50 eShutter
000469-E	3.225,-	HR Digaron-W 5,6 / 70 eShutter
000470-E	2.573,-	Apo-Macro-Sironar digital 5,6 / 120 eShutter
000471-E	3.454,-	HR Digaron-S 4 / 60 eShutter
000472-E	4.204,-	HR Digaron-S 4 / 35 eShutter
000473-E	3.427,-	HR Digaron-S 4 / 100 eShutter
000482-E	4.042,-	HR Digaron-S 5,6 / 180 eShutter
000483-E	5.903,-	HR Digaron-S 4,5 / 28 eShutter
000484-E	6.428,-	HR Digaron-S 5,6 / 23 eShutter
000498-E	4.535,-	HR Digaron-W 4,0 / 40 eShutter
000535	3.192,-	Apo-Digitar 5,6 / 35 XL Schneider el. 0
000537	2.542,-	Apo-Digitar XL 5,6 / 35 Copal 0
000543	3.173,-	Apo-Digitar XL 5,6 / 43 Schneider el. 0
000560	2.175,-	Apo-Digitar XL 5,6 / 47 Schneider electr. 0
000562	2.045,-	Apo-Digitar L 4,0 / 80 Schneider electr. 0
000563	2.045,-	Apo-Makro Digitar 5,6 / 80 Schneider electr. 0
000564	1.723,-	Apo-Digitar N 4,5 / 90 Schneider electr. 0
000566	2.063,-	Apo-Digitar N 5,6 / 120 Schneider electr. 0
000568	2.234,-	Apo-Digitar N 5,6 / 150 Schneider electr. 0
000569	2.264,-	Apo-Digitar L 5,6 / 72 Schneider electr. 0
000576	2.253,-	Apo-Digitar T 5,6 / 180 Schneider electr. 0
000584	3.216,-	Apo-Digitar 5,6 / 60 Schneider electr. 0
000600	upon request	Super-Symmar XL 4,5 / 80 Asph. Copal 0
000626	upon request	Apo-Tele-Xenar 5,6 / 400 Compact Copal 3
000633	1.057,-	Apo-Symmar L 5,6 / 120 Copal 0
000641	1.246,-	Apo-Symmar L 5,6 / 150 Copal 0
000646	1.686,-	Apo-Symmar L 5,6 / 210 Copal 1
000775	upon request	Technorama 612 Super-Symmar XL 4,5 / 80 Asph.
000776	upon request	Technorama 612 Apo-Symmar L 5,6 / 120
000777	upon request	Technorama 612 Apo-Symmar L 5,6 / 150
000778	upon request	Technorama 612 Apo-Symmar L 5,6 / 180
000830	upon request	Grandagon N 4,5 / 65 Copal 0
000834	upon request	Grandagon N 4,5 / 90 Copal 1
000836	upon request	Grandagon N 6,8 / 90 Copal 0

000861	upon request	Apo-Sironar S 5,6 / 100 Copal 0
000868	upon request	Super-Angulon XL 5,6 / 58 Copal 0
000873	2.324,-	Super-Angulon XL 5,6 / 90 Copal 0
000874	1.420,-	Apo-Sironar S 5,6 / 135 Copal 0
000876	1.436,-	Apo-Sironar S 5,6 / 150 Copal 0
000878	1.479,-	Apo-Sironar S 5,6 / 180 Copal 1
000880	upon request	Apo-Sironar S 5,6 / 210 Copal 1
000882	upon request	Apo-Sironar S 5,6 / 240 Copal 3
000884	upon request	Apo-Sironar S 5,6 / 300 Copal 3
000886	upon request	Apo-Sironar S 6,8 / 360 Copal 3
000894	upon request	Technorama 612 Super-Angulon XL 5,6 / 58
000901	2.008,-	Super-Angulon XL 5,6 / 72 Copal 0
000905	upon request	Apo-Macro-Sironar 5,6 / 180 Copal 1
000909	upon request	Technorama 617 Super-Angulon XL 5,6 / 72
000910	4.365,-	Technorama 617 Super-Angulon XL 5,6 / 90
000911	2.889,-	Technorama 617 Apo-Symmar 5,6 / 180
000915	upon request	Technorama 617 Tele-Xenar 5,6 / 250
000919	4.225,-	HR Digaron-S/W 5,6 / 90 Copal 0
000921	1.451,-	Apo-Macro-Sironar 5,6 / 120 Copal 0
000927	5.551,-	HR Digaron-W 4,0 / 32 Copal 0
000943	upon request	T617 Shift lens Super-Angulon XL 5,6 / 72
000944	3.635,-	T617 Shift lens Super-Angulon XL 5,6 / 90
000946	2.524,-	Apo-Digitar XL 5,6 / 43 Copal 0
000948	3.386,-	HR Digaron W 4,0 / 50 Copal 0
000951	1.712,-	Apo-Sironar-digital 4,5 / 45 Copal 0
000952	1.809,-	Apo-Sironar-digital 4,5 / 55 Copal 0
000953	2.069,-	HR Digaron-W 5,6 / 70 Copal 0
000958	1.614,-	Apo-Digitar L 5,6 / 72 Copal 0
000960	1.650,-	Apo-Digitar XL 5,6 / 47 Copal 0
000962	1.147,-	Apo-Digitar L 4,0 / 80 Copal 0
000963	1.395,-	Apo-Makro Digitar 5,6 / 80 Copal 0
000964	1.073,-	Apo-Digitar N 4,5 / 90 Copal 0
000966	1.414,-	Apo-Digitar N 5,6 / 120 Copal 0
000968	1.584,-	Apo-Digitar N 5,6 / 150 Copal 0
000969	1.649,-	Tele-Xenar 5,6 / 250 Copal 1
000970	1.417,-	Apo-Macro-Sironar digital 5,6 / 120 Copal 0
000971	2.298,-	HR Digaron-S 4,0 / 60 Copal 0
000972	3.048,-	HR Digaron-S 4,0 / 35 Copal 0
000973	2.271,-	HR Digaron-S 4,0 / 100 Copal 0
000974	1.604,-	Apo-Digitar T 5,6 / 180 Copal 0
000980	4.747,-	HR Digaron-S 4,5 / 28 Copal 0
000981	2.886,-	HR Digaron-S 5,6 / 180 Copal 0
000982	5.273,-	HR Digaron-S 5,6 / 23 Copal 0
000983	3.379,-	HR Digaron-W 4,0 / 40 Copal 0
000984	2.566,-	Apo-Digitar 5,6 / 60 Copal

LENSBOARDS		
001001	101,-	Flat Lensboard 23 with center hole
001013	101,-	Flat Lensboard 45 with center hole
001015	275,-	Rec. Lensboard 45, Copal 0 with cable release socket
001017	153,-	Flat Lensboard 4x5, Compur 0
001026	110,-	Flat Lensboard 4x5, Compur / Copal / Prontor 01S / 1S
001035	287,-	Rec. Lensboard 45, Copal 0 with cable release socket
001036	624,-	Rec. Lensboard 45, Copal 0 with cable release socket
001037	624,-	Rec. Technika Lensboard with helical focus mount for Super-Angulon XL 5,6 / 47
001038	624,-	Rec. Technika Lensboard with helical focus mount for Super-Angulon XL 5,6 / 58
001040	123,-	Flat Lensboard 57 with center hole 8 mm (Rodenstock 45)
001045	164,-	Flat Lensboard 45, MT 3000, with center hole 8 mm (Rodenstock 45)
001047	242,-	Rec. Lensboard 45, Copal 0 with cable release socket
001058	312,-	Flat Lensboard 23 w. tube Compur/Copal/Prontor 3
001059	104,-	Flat Lensboard 45 Compur/Prontor 3
001070	299,-	Technika Reducing Lensboard Adapter 45 / 23
001080	107,-	Flat Kardan Lensboard with hole size 0
001081	107,-	Flat Kardan Lensboard with hole size 1
001083	107,-	Flat Kardan Lensboard with hole size 3
001087	186,-	Flat Kardan Lensboard Adapter 45
001088	214,-	Flat Kardan Lensboard Adapter 23
001090	242,-	Recessed Kardan Lensboard with hole size 0
001091	242,-	Recessed Kardan Lensboard with hole size 1
001092	242,-	Recessed Kardan Lensboard Adapter 23
001093	299,-	Recessed Kardan Lensboard Adapter 45
001094	269,-	Kardan Lensboard double recessed
001100	361,-	Adapter Linhof M 679 for Technika 45 Lensboards
001101	367,-	Adapter Linhof Kardan for M 679
001102	367,-	Adapter Sinar / Horseman for M 679
001103	367,-	Adapter Cambo for M 679
001104	210,-	Adapter plate for Hasselblad Finder
001105	284,-	Adapter plate for Acra Swiss Bino Tube for Linhof M 679
001105-S	284,-	Adapter plate for Acra Swiss Bino Tube for Linhof M 679
001106	110,-	Flat Lensboard 23 Compur/Copal 1
001119	104,-	Flat Lensboard 45 Copal 3
001119z	104,-	Flat Lensboard 45 Copal 3, center hole
001120	153,-	Flat Lensboard 45 Copal 0, with cable release socket
001121	155,-	Flat Lensboard 45 Copal 1, with cable release socket
001124	155,-	Flat Lensboard 23 Copal 0, with cable release socket
001126	155,-	Flat Lensboard 45 Compur 1, with cable release socket
001138	243,-	Flat Lensboard 45, MT 3000 Schneider 38 XL
001143	101,-	Flat Lensboard 45 Compur / Copal 0
001147	169,-	Flat Lensboard 45, MT 3000, 47 XL Copal 0, with cable release socket
001148	226,-	Flat Lensboard 45, MT 3000, 58 XL Copal 0, with cable release socket
001153	123,-	Recessed Lensboard 45, Center Hole

001158	143,-	Flat Lensboard 23 Copal 0, w. cable release socket
001159	225,-	Lensboard 45 with spacer tube MT 3000, Copal 0
001160	110,-	Flat Lensboard M 679 with hole size 0
001161	110,-	Flat Lensboard M 679 with hole size 1
001163	157,-	Recessed Lensboard M 679 with hole size 0
001164	179,-	Recessed Lensboard M 679, with hole size 1 / Rollei Shutter
001173	110,-	Flat Lensboard M 679 with hole size 3
001174	217,-	Double Rec. Lensboard M 679, with hole size 1 / Rollei Shutter
001175	214,-	3x recessed Lensboard M 679, with hole size 0
001176	201,-	Double recessed Lensboard M 679 with hole size 0
001177	225,-	3x recessed Lensboard M 679, with hole size 1 / Rollei Shutter
001178	305,-	4x recessed Lensboard M 679, with hole size 0
001179	242,-	4x recessed Lensboard M 679, special
FINDERS AND ACCESSORIES		
001301	660,-	Technorama Viewfinder 617s III f 72
001302	660,-	Technorama Viewfinder 617s III f 90
001303	660,-	Technorama Viewfinder 617s III f 180
001304	660,-	Technorama Viewfinder 617s III f 250
001306	660,-	Technorama Viewfinder 617s III f 110
001310	698	Technorama Viewfinder 612 f 58 / 120
001311	698	Technorama Viewfinder 612 f 80 / 150
001312	698	Technorama Viewfinder 612 f 180
001373	995,-	Multifocus Optical Viewfinder 23M with mask 6x9 cm
001378	995,-	Multifocus Optical Viewfinder 45F with mask 4x5
001379	95,-	Optical Finder Mask 45 / 9x12 cm
001381	95,-	Optical Finder Mask 45 / 6x9 cm
001382	95,-	Optical Finder Mask 45 / 6x7 cm
001385	95,-	Optical Finder Mask 45 / 4x5
001389	95,-	Optical Finder Mask 23 / 6x9 cm
001397	95,-	Optical Finder Mask 23 / 6x7 cm
001444	95,-	Optical Finder Mask 45 / 6x12 cm
001447	995,-	Multifocus Optical Viewfinder 45M with mask 4x5
001448	95,-	Optical Finder Mask 45 / 6x7 (Rapid Rollex)
FILM HOLDERS / ROLLFILM BACKS		
001459	1.220,-	Super Rollex 4x5 / 6x7
001460	1.220,-	Super Rollex 6x9 / 6x7
001462	832,-	Insert Super Rollex 220, 6x7
001467	832,-	Insert Super Rollex 120, 6x7
001520	1.220,-	Super Rollex 6x9 for M 679 and Techno
001523	1.220,-	Super Rollex 4x5 / 6x9
001524	1.220,-	Super Rollex 6x9 / 6x9
001525	832,-	Insert Super Rollex 120 / 6x9
001560	upon request	Techno Rollex, 4x5 / 6x12
001566	upon request	Rapid Rollex 6x9 / 6x7
001567	upon request	Rapid Rollex 4x5 / 6x7

BACKS AND REDUCING FRAMES		
001611	410,-	Basic Lighthood 6x9
001612	318,-	Folding Focusing Hood 45 (metric/feet table)
001613	257,-	Folding Focusing Hood 23 (metric table)
001614	1.039,-	Technika Universal Back 45M (metric/feet table)
001615	393,-	Groundglass Frame 45
001616	401,-	Revolving Frame 45
001617	upon request	Quickchange Back 23 Technika/TK
001618	2.229,-	Rapid Change Adapter Slide for Master Technika
001630	868,-	Kardan Groundglass Back 45
001640	829,-	Groundglass Back T 617s III
001644	20,-	Groundglass Mask 45 / 24x36
001645	20,-	Groundglass Mask 45 / 37x37
001646	20,-	Groundglass Mask 45 / 4x5 cm
001647	20,-	Groundglass Mask 23 / 24x36
001648	20,-	Groundglass Mask 23 / 37x37
001649	20,-	Groundglass Mask 23 / 4x5 cm
001650	1.760,-	Technorama 617 Shift Adapter for f 72, 90, 110
001675	upon request	Camera Back Frame GTL 45
001684	171,-	Adapter for Arca Suisse Bino Tube 23 for TK 23
001690-S	550,-	Groundglass Adapter for 002768-S
001691	245,-	Universal Digi Adapter 23 for camera Adapter Plates
001692	528,-	Polaroid Back M 679
001693	upon request	Hasselblad V Digi Adapter for Intern. Univ. Back (Type Graflok)
001694	452,-	M 679 Adapter for Hasselblad backs
001695	545,-	M 679 Multi Adapter
001696	299,-	M 679 Adapter for Mamiya RZ backs
001697	422,-	M 679 Universal Adapter for Camera Adapter Plates
001698-S	532,-	M 679 Groundglass back
001700	456,-	Adapter plate for Hasselblad V
001701	456,-	Adapter plate for Hasselblad H 1 AF
001702	456,-	Adapter plate for Mamiya 645 AF / AFD
001704	upon request	Adapter plate for Hy6/Afi
COUPLING PACKAGES / CONVERSION SETS		
001711	147,-	Coupling Cost ST 23
001712	295,-	Coupling Cost ST 23, customer-owned lens
001716	147,-	Coupling Cost MT 45
001717	284,-	Coupling Cost MT 45, customer-owned lens
001718	112,-	Conversion set MT for use of Adapter Slide
001719	239,-	Conversion set MT classic drop bed struts
001743	727,-	Conversion set T 617 XL 5,6 / 72 for Shift Adapter
001744	731,-	Conversion set T 617 XL 5,6 / 90 for Shift Adapter
001745	826,-	Conversion set T 617 XL 5,6 / 110 for Shift Adapter
LENSSHADES / COMPENDIUMS / LENS PROTECTION RINGS		
001901	242,-	Protection Ring for SA XL 5,6/72 and 5,6/90 (old)
001903	242,-	Protection Ring for SA XL 5,6/72 and 5,6/90 (new)
001904	342,-	Protection Ring for Tele-Xenar 5,6/250
001905	242,-	Protection Ring for SS XL 5,6 / 110

001906	155,-	Technorama 617 filter holder
001925	398,-	Compendium Lensshade Techno
001926	398,-	Compendium Lensshade Master Technika 45
001927	398,-	Compendium Lensshade Kardan re, E, GT
001931	398,-	Compendium Lensshade TK 23 + 45
001932	101,-	Vignetting Mask Holder for Comp. + 4 masks
001933	249,-	Compendium Filter Holder M 95x1 / 10x10 cm
001934	525,-	Compendium for RD 1 without Filter Holder
001939	763,-	Basic Compendium Lensshade M 679
001940	1.132,-	Pro Compendium M 679
001941	425,-	Filter Holder M 679
001942	407,-	Vignetting Mask Holder M 679
002013	25,-	Filter Folding Frames (set of 3) 10x10 cm / 4x4 in
CABLE RELEASES		
002429	29,-	Cable release 340 mm, T-lock + turning nipple
002430	31,-	Cable release 430 mm, T-lock + turning nipple
002431	31,-	Cable release 530 mm, T-lock + turning nipple
002434	33,-	Cable release 750 mm, T-lock + turning nipple
002440	35,-	Cable release 530 mm, T-lock + special unthreaded nipple for cable release quicksocket
100247	30,-	Cable release extension 100 mm for Copal
100802	30,-	Cable release extension 50 mm for Copal / Compur
100811	30,-	Cable release extension 100 mm for Prontor Prof.
100700	25,-	Intermediate piece for cable release
MISCELLANEOUS ACCESSORIES		
002503	452,-	Focusing Bellows 45
002504	448,-	Focusing Bellows 23
002505	560,-	Focusing Bellows 57
002507	473,-	Right Angle Reflex Attachment 57
002512	338,-	Anatomical Grip 23, left
002522	119,-	Fresnel Screen 45
002523	101,-	Fresnel Screen M 679
002549	360,-	Anatomical Grip 45, left, with 17 in. cable release
002552	215,-	Anatomical Grip right
002566	101,-	Fresnel Screen 23
002584	452,-	Kardan Wide-angle Bellows 45 (210 mm / 8.5 in.)
002599	33,-	Dual Spirit Level
002606	88,-	Set of 85 mm/3.3 in. Ext. Rods for increased rise Kardan re, E, GT
002619	975,-	Kardan Wide-angle Bellows 8x10 (330 mm / 13 in.)
002628	565,-	Right Angle Reflex Attachment 45
002629	360,-	Right Angle Reflex Attachment 23
002638	23,-	Holder for Fresnel screen 4x5 (set)
002696	1.305,-	Kardan Normal Bellows GT 810 (750 mm)
002714	312,-	Normal Kardan Bellows 45 (500 mm / 20 in.)
002723	452,-	Wide-Angle Bellows TK 45
002724	269,-	Wide-Angle Bellows TK 23
002725	293,-	Normal Bellows TK 23
002726	507,-	Normal Bellows TK 45
002728	158,-	Bellows Support GTL

002730	391,-	Long Monorail GT 600-800 mm / 24-32 in.
002733	155,-	Bellows Support Kardan GT
002735	630,-	Focusing Bellows 810
002738	305,-	Long Monorail GTL 900 mm / 35.5 in.
002740	225,-	Tele/Macro Bracket for TK 23
002741	225,-	Tele/Macro Bracket for TK 45
002751	318,-	Normal Bellows Techno (spare)
002753	299,-	Normal Bellows M 679 (spare)
002754	422,-	Wide-angle Bellows M 679
002755	289,-	Wide-angle Bellows Techno
002757	452,-	Magnifier Viewing System 8x8 for Basic Lighthood / M 679
002758	409,-	Bellows with Magnifier for M 679 and Techno
002763	upon request	Basic Lighthood M 679
002763-S	338,-	Basic Lighthood-S M 679
002766-S	1.692,-	Universal Rapid Change Adapter Slide M 679, 37x37 / 37x71 and format 37x49 / 49x71
002767-S	1.798,-	Universal Rapid Change Adapter Slide (short)
002768-S	1.350,-	Stitchingslide for digital backs with live view for Linhof Techno and Linhof M679cs
002769	81,-	Flexible shafts for M 679cs / Techno shift (2 pieces)
002770	98,-	Fast wind lever for rear standard at Linhof Techno and for 3D Micro
		ACCESSORY STANDS / COPY EQUIPMENT
003015	2.740,-	TECHNOPRO II, 80x90 cm, height 180 cm
003018	380,-	Steel Table for Technopro II
003090	2.507,-	Book Copying Easel 34x50 cm / 14x20 in.
003235	78,-	Metal Loading Plate 32x48 cm/12.5x19 in. for 003090
		TRIPODS
003317	498,-	Twin Shank Pro Tripod Expert 81/186 cm
003323	1.385,-	Heavy Duty Pro, 91/155 cm
003333	510,-	Twin Shank Pro Tripod P, 81/186 cm
003431	2.036,-	Studio Stand II, 80/150 cm /31.5 x 49 in.
003461	upon request	Floor guide rail ext. for Digi Repro 3,00 m
003467	3.546,-	Studiomatic I, 220 cm 220 cm / 110 in. w. acc. tray
		TRIPOD HEADS
003650	431,-	Profi Ballhead III, 90 mm base
003659	249,-	Large Levelling Head 3/8", 77 mm base
003660	995,-	Linhof 3D Micro Levelling Head with Quickfix I
003661-QF	275,-	Angled device for Linhof 3D Micro with Quickfix I
003661-D	275,-	Angled device for Linhof 3D Micro with dovetail-track
003662	995,-	Linhof 3D Micro Levelling Head with dovetail-track for Arca, Novoflex etc.
003663	465,-	3-Way Levelling Head I, 77 mm base
003664	249,-	Large Levelling Head 1/4", 77 mm base
003665	689,-	3-D Levelling Head II with Quickfix I
003666	689,-	3-D Levelling Head II with with dovetail-track for Arca, Novoflex etc.
003667	562,-	Levelling Pan/Tilt Head, 77 mm base

003668	583,-	Levelling Pan/Tilt Head, 90 mm base
003669	1.149,-	Profi 3 Universal Pan/Tilt Head, 90 mm base
003672	upon request	Precision Micro Cradle Head, 90 mm base
003673	339,-	Panorama plate with Quickfix I for 003676, 003675, 003650
003674	339,-	Panorama plate with dovetail-track for Arca, Novoflex etc. for 003676, 003675, 003650
003675	422,-	Profi Ballhead III, 80 mm base
003676	271,-	Profi Ballhead II, 63 mm base
003679	386,-	Profi Ballhead II Q, 63 mm base
003680	562,-	Profi Ballhead III Q, 80 mm base
		TRIPOD ACCESSORIES
003753	18,-	Large Top Plate 77 mm dia.
003755	598,-	Large Geared Centerpost for tripod 003323
003769	13,-	Small Camera Screw 1/4"
003773	13,-	Small Camera Screw 3/8"
003774	16,-	Large Camera Screw 1/4"
003775	16,-	Large Camera Screw 3/8"
003776	375,-	R/A Outrigger Adapter Profi 3 + HD Pro Tripod
003845	14,-	Small Top Plate 42 mm dia.
003850	upon request	HD Accessory Platform 30x42 cm, 3/8"-bushing
003852	152,-	Accessory Tray 30x40 cm / 12x16 in. 3/8"-bushing
003853	76,-	Quickchange plate for levelling heads 003667/68
003856	76,-	Quick-Change Plate (spare) f. Profi 3 Head 003669
003857	148,-	Outrigger arm for 003431
003863	249,-	Clamp Mount 90 w/dovetail fitting for Studiomatic
003864	176,-	Camera Top Plate 3/8" w/dovetail for Studiomatic
003865	611,-	High/Low Outrigger with turnable clamp mount 90
003866	128,-	Dovetail Retaining Bracket for Studiomatic
003867	182,-	Clamp Mount 90 w/screw-on fitting
003870	140,-	Camera Top Plate 90 w/screw-on fitting 3/8"
003871	13,-	Support Plate for Top Plate 77 mm
003872	98,-	Add. Counterweight 5 kg / 11 lb. for Studiomatic I
003875	32,-	Quickfix I Adapter Plate (spare)
003877	33,-	Quickfix II Adapter Plate (spare)
003878	32,-	Quickfix I Adapter Plate for 35 mm cameras
003880	135,-	Quickfix I Tripod Connector with Spirit Levels
003881	145,-	Quickfix II Tripod Connector with 3/8" Screw
003901	40,-	Format dial M 679cc for format 6x6 - 6x8
003902	40,-	Format dial M 679cc for 3x3
003903	40,-	Format dial M 679cc for 6x9
003905	40,-	Format dial M 679cs for format 6x6-6x8
003906	40,-	Format dial M 679cs for format 3x3
003907	40,-	Format dial M 679cs for format 6x9
003908	40,-	Format dial M 679cs for format 24x36
003909	40,-	Format dial M 679cs for format 33x44
003910	40,-	Format dial M 679cs for format 36x48
		CUTFILM HOLDERS
021468*	upon request	Double Cutfilm Holder 8x10
021479*	upon request	Double Cutfilm Holder 4x5

GROUNDGLASSES / SCREENS		
021802	91,-	Groundglass 57 / 13x18 / cm-grid / scoring 5x7 in.
021804	20,-	Groundglass 45 without scoring
021805	80,-	Groundglass 45 / cm-grid / Multi format scoring
021807	68,-	Groundglass 23 / cm-grid / scoring 6x7 cm
021808	101,-	Groundg. 57/13x18 / cm-grid / scoring 5x7 in. / clear center spot
021812	90,-	Groundglass 45 / cm-grid / clear center spot
021813	74,-	Groundglass 23 / cm-grid / scoring 6x7 / clear center spot
021816	225,-	Groundglass 810 / cm-grid
021822	153,-	Fresnel Screen 57 / 13x18
021830	upon request	Groundglass 57 / cm-grid, AMS mm scale
021831	96,-	Groundglass 45 / scoring 9x12, AMS mm scale
021833	85,-	Groundglass scoring 3x3, M 679
021833-S	85,-	Groundglass scoring 3x3, M 679
021834	85,-	Groundglass scoring 6x6, M 679
021834-S	85,-	Groundglass scoring 6x6, M 679
021835	85,-	Groundglass scoring 6x7, M 679
021835-S	85,-	Groundglass scoring 6x7, M 679
021836	upon request	Groundglass scoring 6x8, M 679
021836-S	85,-	Groundglass scoring 6x8, M 679
021837	85,-	Groundglass scoring 24x36 / 36x63, M 679
021837-S	85,-	Groundglass scoring 24x36 / 36x63, M 679
021838	85,-	Groundglass scoring 37x37 / 37x71, M 679
021838-S	85,-	Groundglass scoring 37x37 / 37x71, M 679
021839	85,-	Groundglass scoring 72x88, M 679
021840	85,-	Groundglass scoring 37x49 / 49x71, M 679
021840-S	85,-	Groundglass scoring 37x49 / 49x71, M 679
021841	85,-	Groundglass scoring 33x44, M 679
021841-S	85,-	Groundglass scoring 33x44, M 679
021842-S	85,-	Groundglass scoring 6x9, M 679
021845-S	85,-	Groundglass scoring 53,9x40,4, M 679 (PhaseOne P65+)
021846-S	85,-	Groundglass scoring 56x36 / 71x56, M 679 (Leaf Afi 10 / Aptus 10)
021849-S	698,-	Groundglass scoring M 679, fresnel 43,9x32,9
021850-S	698,-	Groundglass scoring M 679, fresnel 49x37
021851-S	698,-	Groundglass scoring M 679, fresnel 53,9x40,4
021852-S	698,-	Groundglass scoring M 679, fresnel 56x36
FILTER		
022280	214,-	Center filter Ili, M 58 - Apo-Digitar XL 5,6 / 43
022282	304,-	Center filter IIIB, M 67 - SA 5,6/58 XL + SA 8 / 90 und SS 4,5 / 80 ASPH + SS 5,6 / 110 XL
022283	467,-	Center filter IVA, M 95x1 - SA 5,6 / 90 XL+150 XL
022285	214,-	Center filter IIF, M 52 - Apo-Digitar 5,6 / 35 XL
022289	462,-	Center filter IVD M 95 f. Super Digitar 5,6 / 28 XL
022290	214,-	Center filter IIH M 62 for Apo Digitar 5,6 / 60 XL
022291	upon request	Center filter M 82 - GRAN N 4,5 / 90 + 6,8 / 115
022292	upon request	Center filter M 58 - GRAN N 4,5 / 65 + 6,8 / 75
022295	646,-	Centerfilter M 86 - HR Digaron-S 5,6 / 23 + 4,5 / 28
022296	712,-	Center filter M 72 - HR Digaron-W 4 / 32

022301	506,-	Center filter M 67- A-Sironar digital 4,5 /35 /45 /55
022302	462,-	Center filter IVB, M 95x1 - SA 5,6 / 72 XL
022306	upon request	Center filter M 67 - GRAN N 4,5 / 75 + 6,8 / 90
022307	upon request	Center filter IIB für 5,6 / 24 XL integral
022308	upon request	Center filter IIG, für 5,6 / 35 XL integral
CAMERA CASES		
022457	598,-	Aluminum Case Master Technika (44x44x18 cm)
022471	398,-	Aluminum Case Technorama 612pc II
022481	452,-	Aluminum Case Technikardan 23 / 45
022489	465,-	Aluminum Case Technorama 617s III
022490	upon request	Insert f. Universal-Photobag Master Technika, spare (König)
022491	210,-	Systainer M 679
022492	222,-	Systainer II M 679 for Accessories
022493	299,-	Outddor.case for Techno
022496	562,-	Universal-Photobag Master Technika (König)
022497	530,-	Universal-Photobag Technorama 612/617 (König)
022498	upon request	Insert for Universal-Photobag Technorama 612, spare (König)
022499	upon request	Insert for Universal-Photobag Technorama 617, spare (König)
SCHNEIDER ELECTRONIC SHUTTER		
022500*	1.100,-	Schneider Electronic Shutter 0 NK0-123
022515*	160,-	Powersupply International
022517*	300,-	Adapter Cable NK0-118 for Imacon
022526*	upon request	SC Power Supply without battery
022528*	126,-	SC-Imacon Ixpress, Control Cable for Shuttercontrol
022529*	67,-	SC Cable Hasselblad Interface
022532*	808,-	USB Interface (complete)
022533*	10,-	USB Cable, 5 m (spare)
022534*	24,-	Shutter Release Cable with Key (spare)
022535*	30,-	Synchro Cable (spare)
022536*	10,-	Cable Euro plug
022537*	10,-	Cable UK plug
022538*	10,-	Cable US and Japan plug
022539*	63,-	Hasselblad Interface Hasselblad V-Adapter
022540*	27,-	Adapter Cable Imacon Ixpress CF
RODENSTOCK eShutter		
022541*	1.646,-	Rodenstock eShutter
022542*	1.182,-	Interface Box / eShutter Control
022545*	345,-	Mounting cost for Schneider lenses in Rodenstock eShutter

GENERAL ACCESSORIES		
022561	232,-	Fresnel Screen 810
022610	55,-	Camera Neck Strap 23 for ST V, Technorama, MT
022612	232,-	Magnifier 3x, Schneider
022620	112,-	Linhof Focusing Cloth 120x120 cm
022621	63,-	Linhof Magnifier Adapter for Groundglass Back T 617
022767	41,-	Profi Cable Release 700 mm
022777	114,-	Spare Connector Cable for Control Unit 022760
022780	39,-	Flash contact angled
TRIPOD CASES		
023304	105,-	Tripod Case for Lightweight Pro Tripod
023305	105,-	Tripod Case for Lightweight Pro Tripod
023308	158,-	Tripod Case for HD Pro + Profi 3 Tripod without centerpost
023309	165,-	Tripod Case for HD Pro Tripod with centerpost
023313	115,-	Tripod Case for Twin Shank Pro, length 97cm / 38 in.
BOOKS ETC.		
025025	33,-	Linhof Camera Story (Book)
025104	5,-	Operating Manual M 679cs German
025105	5,-	Operating Manual M 679cs English
025130	31,-	Lens Tilt and Swing / Depth-of-Field Calculator
ACCESSORIES		
004262	2,-	Reducing Bushing 3/8" to 1/4"
031482	72,-	Flat Tripod Top Plate 90 - 3/8"
032965	72,-	Flat Tripod Top Plate 90 - 1/4"
032933	388,-	Super Rollex Housing 23 / 6x9
032974	388,-	Super Rollex Housing 45 / 6x9
032990	388,-	Super Rollex Housing 45 / 6x7
033200	388,-	Super Rollex Housing 23 / 6x7
041066	4,-	Screw-on nipple for cable release for quicksocket
045296	25,-	Rapid cable release new
045298	25,-	Rapid cable release for flat lensboards, shutter size 0 and 1
051644	23,-	Large Camera Screw 1/4" for 003663
052709	23,-	Large Camera Screw 3/8" for 003663
056084	5,-	Retaining Screws Quickfix 3/8"
056325	5,-	Retaining Screws Quickfix 1/4"
064924	533,-	Adapter for Anagramm Scanning Back

SPARES		
034128	6,-	Rubber Foot for tripod 003414, 003333
004508	2,-	Washer (3x) for 034128
035544	6,-	Rubber Foot for tripod 003323, 003454
035545	3,-	Rubber Holder for Rubber Foot 035544
004555	2,-	Washer (3x) for Rubber Foot 035544
058129	130,-	Retaining Adapter (spare) for 001931
058272	130,-	Retaining Adapter (spare) for 001926
058277	130,-	Retaining Adapter (spare) for 001927
101243	31,-	Dark slide 617 (spare)
056340	31,-	Dark slide 612 (spare)
SURCHARGE FOR MINIMUM ORDER		
089000		For orders of less than 15,- Euro a surcharge of the difference to 15,- Euro will be levied (not for books).

1. DELIVERY

All orders, confirmations, deliveries and shipments are subject to the following general terms, provided other conditions are not specifically agreed upon in writing between us and the buyer. For all deliveries our order confirmation shall be applicable. Delivery dates shown on our order confirmations are not binding. We cannot assume any liability, claims or refunds arising from non-delivery or unforeseen delays in the completion of orders.

2. PRICES

All prices shown in our price list, in special quotations and in our order confirmations are to be understood for delivery ex works Munich without packing.

All prices are based on raw material and manufacturing costs prevailing at the time of printing of such price lists. Quotations or order confirmations are subject to change without notice. All export invoices are made out in Euro. If the invoice is paid in any other currency, the current rate of exchange of Euro is valid. Any resulting difference in currency is exclusively borne by the buyer. The same applies if, according to special demand of the buyer, the invoice is made out in foreign currency. All prices subject to change without notice.

3. PAYMENT

Export deliveries will be carried out only against sufficient documentary coverage such as letter of credit or similar means. Where shipment is made on open account our terms of payment are: net, 14 days after date of invoice. Cash discounts or other deductions are not granted. We reserve the right to supply against prepayment upon advice that the goods are ready for dispatch alternatively C.O.D. (cash on delivery) or other terms of payment or agreement.

Valid for domestic supplies and export deliveries: Amounts not paid within 14 days become automatically overdue without written notice from us, and we reserve the right, without prejudice to other rights, to charge 4% above the current discount of the Europäisches Währungs-institut on the amount overdue.

4. RIGHT OF PROPERTY

All merchandise shall remain our property with full title until complete settlement of the invoice value is made. The buyer shall not pledge, pawn or otherwise transfer merchandise not fully paid for. Such merchandise may be disposed of only in the regular business routine of the buyer and the buyer specifically agrees to transfer irrevocably to us title to any sums due or paid to him by others for such merchandise and to hold in trust for us any moneys collected which must be paid to us without delay, up to the full amount including interests. Any distress-warrant by a third party should be notified to us by writing immediately.

5. TRANSPORTATION RISK AND INSURANCE

All transportation risk is transferred to the buyer when the merchandise leaves our factory or when it is placed at buyer's disposal. In case of damage in transit, the buyer has to supply written proof. In case of damage in transit we immediately need a certified statement by the postal authorities. All other kinds of shipment require an unobjectionable proof of the damage in transit.

6. RETURNS

No merchandise may be returned to us, for any reason whatsoever, without our prior written authorization. Any authorized return must be shipped to us carefully packed and freight pre-paid. Insurance will be covered by the sender. Refurbishing and/or restocking charges may apply.

7. CLAIMS AND LIABILITY

Goods shall be inspected immediately. Obvious defects are to be reported within 10 days after receipt of goods to us in writing. Claims to warranties for defects not reported in good time shall not be accepted. Parts sent to us for processing will be handled to the best of our ability.

However, in case of fracture or other damage to the material, should this damage be due to gross negligence on our part, we will be liable only up to the agreed processing cost of the material in question, but not for the material itself.

Our warranty will be limited to the supply value of our products. Any further liability claims - especially claims for restitutions of further damages - shall be excluded. This applies equally to claims arising from culpa in contrahendo, positive violation of claims and other legal grounds. We accept liability for the presence of guaranteed properties. When manufacture takes place according to customer's drawing, no liability whatsoever can be accepted regarding the infringement of patent rights of third parties.

8. CUSTOM-MADE MODIFICATIONS, SPECIAL INSTALLATIONS

Equipment on which special modifications were made, cannot be returned and any claims arising from a faulty operation of the equipment in such cases cannot be accepted.

9. SPECIFICATIONS, ILLUSTRATIONS AND INFORMATIONS

In view of always possible improvements or otherwise justified adjustments, it is explicitly understood that all our specifications or design features as printed or illustrated in our literature are subject to change without notice. We are not obliged to give any special information as far as alternations are concerned. We cannot be held responsible for any erratum. Any information given for equipment of sub-suppliers is absolutely not binding for us.

10. The export of our products to other countries than member countries of the E.U. is permitted only with our authorization.

11. PLACE OF FULFILLMENT AND VENUE OF JURISDICTION

Any disputes arising shall be settled by a competent court at Munich, Germany. German Law shall be applied.

12. VALIDITY

The above terms are considered agreeable as soon as an order was placed and confirmed. Terms of the purchaser are not considered binding if they are contradicting the above. In cases of disputes, the legal interpretation of the German version of these terms shall be applied.

Technical specifications, constructions and prices are subject to change without notice.

FACTORY ADDRESS

RUPERT-MAYER-STRASSE 45
81379 MÜNCHEN / GERMANY

MAILING ADDRESS

P.O.BOX 70 12 29
81312 MÜNCHEN / GERMANY

TEL. +49 89 72492-0
FAX +49 89 72492-250
<http://www.linhof.de>
info@linhof.de

BANK DETAILS

RAIFFEISENBANK RUPERTIWINKEL EG
BLZ 701 691 91
KONTO 455 00
IBAN DE66 7016 9191 0000 0455 00
BIC GENODEF1TEI

COMMERZBANK AG
BLZ 700 800 00
KONTO 0530327800
IBAN DE79 7008 0000 0530 3278 00
BIC DRES DE FF 700

PRESIDENT

DIPL.-ING. PETER BAUERNSCHMID
PLACE OF FULFILLMENT AND VENUE
OF JURISDICTION MÜNCHEN
HRB NR. 122812
VAT REGISTRATION NUMBER
DE812620853

LINHOF AGENCIES IN ALL MAJOR CITIES OF THE WORLD.

This price list replaces all previous price lists.
Prices subject to change. 01/2015