

OPERATING HINTS FOR GROUNDGLASS BACK MASTER TECHNIKA CLASSIC AND MASTER TECHNIKA 3000

DETACHABLE GROUNDGLASS BACK OF MASTER TECHNIKA CLASSIC AND MASTER TECHNIKA 3000

For adapting the new Rapid Change Adapter Slide (001618) operating digital backs the groundglass back can now be removed.

Push the release push-button (39) of the revolving frame for unlocking and turn the revolving back (24) by 45 degrees. By pulling-out the 4 holding slides (red arrows) the total groundglass back is unlocked. The back can be taken off and can be replaced by the Rapid Change Adapter Slide.

For adapting the Master Technika Rapid Change Adapter Slide the revolving back can now be removed.



MADE IN GERMANY



MASTER TECHNIKA SYSTEM

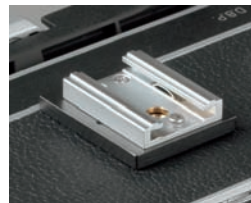
AMENDMENTS FOR
OPERATING

Linhof

LINHOFF PRÄZISIONS-SYSTEMTECHNIK GMBH | RUPERT-MAYER-STRASSE 45 | D-81379 MÜNCHEN | TEL. +49.89.724920 | FAX +49.89.72492250 | info@linhof.de | www.linhof.de/

LINHOFF PRÄZISIONS-SYSTEMTECHNIK GMBH

Linhof



Easily detachable accessory shoe covering a tripod mount. An allen key for unscrewing is added (also with Master Technika classic).



By pulling out the four holding slides you can take-off the revolving back of the Master Technika for adapting the Rapid Change Adapter Slide (also with Master Technika classic).



ONLY MASTER TECHNIKA 3000
Turning knob for easy outside moving of the built-in wide angle focusing track. A clamping lever is situated under the knob (arrow).



The struts of the drop bed now offer 4 instead of 3 notches. The baseboard can therefore be further dropped for avoiding vignetting (also with Master Technika classic).

ONLY MASTER TECHNIKA 3000
One pair of infinity stops for 3 wide angle lenses: 38, 47 and 58 mm.

Linhof Master Technika 3000 with built-in wide angle focusing track and dropped baseboard.



ONLY MASTER TECHNIKA 3000
Spring loaded release lever

Please note the following design improvements of the Linhof Master Technika classic and Master Technika 3000:

The baseboard can now be dropped with a fourth notch of the struts thus permitting vertical images without vignetting even when using extreme wide angle lenses.

The accessory shoe can now easily be removed with the aid of an allen key (added to the camera) for using the tripod thread underneath permitting photography with the camera upside down. This also improves the vertical shift facilities of the camera.

WIDE ANGLE FOCUSING TRACK OF THE MASTER TECHNIKA 3000

The built-in wide angle focusing track can now comfortably be operated by a turning knob outside the camera body.

For the extreme wide angle lenses 38, 47 and 58 only one pair of infinity stops is necessary. Each lens is supplied with an individually adjusted lensboard permitting to restrict the infinity stops to one pair only. This facilitates the quick change of the camera from closed to operating position with any of these 3 lenses.

Operating position

1. Open the camera. Let the drop bed down until the bed strut clicks into the notch required. The new facility is the fourth notch permitting a further drop of the baseboard for avoiding vignetting when taking vertical images.
2. Release clamping lever (under the focusing knob) for unlocking the wide angle focusing track. Front position = locked, rear position = unlocked.
3. Move the wide angle focusing track with the turning knob until the spring loaded release lever on the right side of the wide angle focusing track clicks. Then turn back the the the focusing track to stop position with the turning knob.

4. Fold-up infinity stops if placed on the wide angle focusing track. Pull-out lens standard with the pull-out grips (11) until infinity stops. Taking position for focusing to infinity is given. The mounting of the infinity stops to be adjusted with the corresponding lens should be done in the Munich factory or by an authorized Linhof service.
5. Focusing of shorter distances than above is always handled with ground-glass control.

Closing the camera

Before closing the camera remove the lens and follow this procedure:

1. Press the spring loaded release lever at the right side of the wide angle focusing track whilst returning the track with the aid of the focusing knob until the park position is reached.
2. Push-back the lens standard with the aid of the grips (11) until stop. Press both drop bed struts (17) and close the baseboard (see page 9)